



February 2018

Welcome New Friends Executive Director: Alix Danielsen!



Alix's path to the Refuge and Friends is a diverse one. After spending several years in the wine business, Alix took a hiatus to thru-hike the Pacific Crest Trail, an experience that encouraged a career shift towards a more environmentally-minded career. Alix moved from

San Francisco to the Willamette Valley to work with farmers on conservation and natural resource management, and eventually went to work with social marketing agencies on environmental and public health campaigns. Most recently, Alix worked for the Clackamas River Basin Council, managing outreach and engagement with landowners, partners, and diverse community members on water quality and habitat protection. Alix has had extensive non-profit and board experience, and is passionate about protecting our natural spaces, and connecting people to nature in meaningful, culturally-relevant ways. Alix looks forward to getting to know the many Friends members, volunteers, partners, and community supporters!

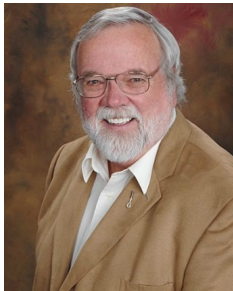
Welcome New (and renewing) Board Members!

Debbie Raffelson:



Debbie's family has been in Ridgefield for over 100 years. She cares about our community and our refuge and has been a board member since 2014. She is the chair of our Annual Membership and Volunteer Appreciation Dinner, and will be moving into the Treasurer position this coming year. Fun Fact: When she was younger, she wanted to be a rodeo clown or a nun.

Rick Browne:



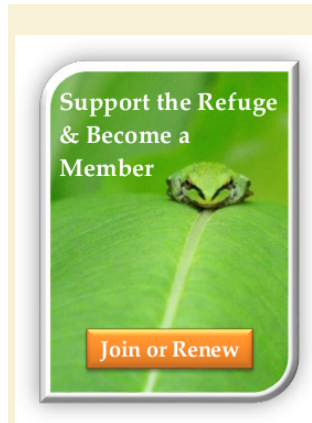
Rick has supported the Refuge for 15 years, beginning when he was Photo Editor of The Columbian, when he made sure we had at least one well-displayed picture from the Refuge each month. He then continued by initiating a photo contest in Ridgefield Living Magazine to further educate and encourage the public to visit, support, and appreciate the bounty we all find at the Refuge. Fun Fact: While being known for

20 years of barbecue cookbooks, TV shows, and public appearances, Rick placed 5th in the World Food Championships in the Dessert Category with his Blue-Barb English Shortbread Tart.

Kent Landerholm:

In This Issue...

- [Calling all Volunteers!](#)
- [New Board Meeting Time](#)
- [Ridgefield First Saturday](#)
- [Species Spotlight](#)
- [Your Refuge, Your Way](#)
- [Represent the Friends](#)
- [Need a 2018 Calendar?](#)
- [Birding Enthusiasts](#)
- [Welcome New Friends ED!](#)
- [Welcome Board Members!](#)
- [We need your PO Box!](#)
- [Save the Date](#)
- [From the Contact Station](#)
- [Environmental & Cultural Education Program](#)
- [Ridgefield National Wildlife Refuge Complex](#)
- [Cathlapotle Plankhouse](#)
- [Habitat Restoration](#)
- [Partner Events](#)
- [Help the Friends and the Refuge](#)



Benefits of Membership:

Discounts at Local Businesses for New and Renewing Members:



Would you like to enjoy a cup of coffee from Ridgefield's Seasons after a morning hike on the Refuge? Or perhaps breakfast before you head out on the auto tour route at End of the Road Cafe? Lunch at Vinnie's Pizza in-between the River 'S' and Carty Units? Dinner and drinks at the Historic Sportsman's Restaurant and Lounge after a busy day of wildlife viewing (5% off with member card!)? Or maybe you would like to get a discount on some supplies at Shorty's or Backyard Bird Shop?

Find out more, or become a Friend or renew your membership today, and receive a member card with great discounts at these wonderful local businesses! Feel free to contact us for any questions or inquiries.

Events

Calling all Volunteers!



Kent and his family currently live in the unincorporated area north of the town of Ridgefield, but also have a long family history dating back to the late 1800s in Clark County. The family owns and operates a small tree farm. He is also owner of Landerholm & Associates, Inc., a property management, land use planning and public policy management firm. He has served on many boards and has extensive fundraising experience. Fun Fact: In

the 1980's he competed in various Highland Games throughout Scotland. He proudly wore a kilt!
Tanna Engdahl:



Tanna is retired from a 30-year Federal career in HUD Indian Housing, BLM, NPS and Bureau of Indian Affairs agencies. Her program management background has carried into retirement with volunteer services in conservation, church and tribal activities. She states she is passionate about land, water, rivers, native plants and habitat as well as clean water, clean air and habitat restoration. Fun Fact:

When Tanna was a reporter, she politely disengaged from visiting with a very nice lady in the Ladies Room to hurry back to the newsroom. She happened to

glance at the monitor and recognized the lady, being interviewed live on air. It was Ginger Rogers.

Alex Earl:



Alex and his family are new residents of Ridgefield. Alex has worked for more than a decade in the environmental nonprofit sector as an Executive Director, Development Director, and Volunteer Board Member on a global scale. He is experienced in leading and implementing successful initiatives to raise funds and increase participation in

organizations devoted to enhancing and protecting the natural world. He wants to bring that experience and passion for the environment closer to home by serving on our Friends RNWR Board. Fun Fact: Alex went to the only international public school in North America with students from the US and Canada.



Spring Volunteer Training:

Whether you want to work with students and the public to spread the conservation message, teach about local indigenous culture, or get your hands dirty doing habitat work, this training will show you how local refuges manage habitat and inspire people. This four part interactive series will include presentations, activities, and field trips. Topics being developed may include major restoration techniques such as fire management, oak restoration, wetland and field conservation for waterfowl, and floodplain restoration in the Gorge. Local indigenous culture and the long history of habitat conservation by First Peoples will be explored through the Cathlapotle Plankhouse. Species specific presentations and tours of the Refuge will highlight the wildlife that benefit from these activities and communication techniques to share this great work with our surrounding communities.

If any of this sounds interesting contact: Josie Finley at 360-887-4106 or josie_finley@fws.gov for questions and to sign up.

Trainings will be Saturdays:
March 31 & April 7, 14 & 21, 2018

Note: March 14th will be Cathlapotle Plankhouse Day- Required for docents and Carty Trail Stewards

Types of opportunities:

Habitat restoration is an ongoing job, and someone's gotta do it! Restoration can be anything from tree watering, bulrush pulling, beaver cages, and more! Check out the Habitat section below for more details, or email Sean_Davis@fws.gov to sign up!

To become an education or naturalist volunteer, and help with school groups, hikes, walks and more, contact RidgefieldVolunteer@FWS.gov or Plankhouse@gmail.com

Now you can sign up to volunteer easily on our website! [Check it out by clicking here!](#)

Don't forget to glance at the [Refuge calendar](#), your one-stop shop for fun activities and volunteer opportunities!

If you live in Downtown Ridgefield....

Give us your PO Box!

If you are a member, donor or sponsor with us and live in downtown Ridgefield, on Main and Pioneer up to 9th, including all the numbered streets to 9th and all the named streets to the north edge of town, please make sure we have your PO Box address instead of your physical house address. This helps us get things to you like renewal reminders and invitations, and helps out the post office that can't deliver to that area.



Attention! New Board Meeting Time!



The Friends of Ridgefield National Wildlife Refuge Board Meeting time is changing in 2018!

Meetings will now be at 5:00pm, instead of 4:00, the second Monday of every month at the Port of Ridgefield. Contact us to let us know if you would like to attend!

Upcoming Events to Save the Date for:

Keep an eye out for more information on these events coming 2018!

Ridgefield First Saturday: Tailgate Party

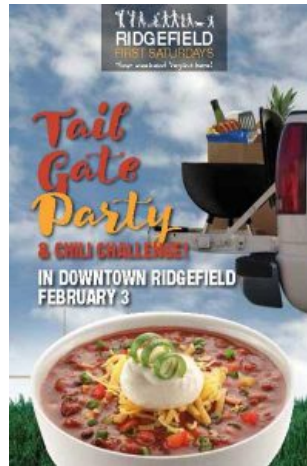


**Cathlapotle Plankhouse
Season Opening:**
Saturday May 5th, 2018,
12-4pm 28908 NW Main
Ave Ridgefield, WA
98642

**Friends of Ridgefield
National Wildlife
Refuge Annual
Fundraiser 2018:**
Friday, July 20th, 2018 -
Evening, Lucy's Garden
- 3302 NW Carty Rd,
Ridgefield, WA 98642



and Chili Challenge February 3, 2018 10am-3pm



Bundle up the kids, round up your prized pigskin, throw on your favorite team colors, and truck on down to Overlook Park for a tailgate party extravaganza!

Enjoy loads of activities and festive foods that are sure to warm your body and spirit.

[See the full schedule here!](#)

From the Contact Station



Red-tailed Hawk Variation

As I have said in the past, I love winter on the River 'S'. Often, I can see multiple Red-tailed Hawks without setting foot outside the contact station. There are several that perch and hunt within view...

Typical Red-tailed Hawk characteristics are fairly easy: belly band, red tail, dark head and the dark patagial mark on the forward edge of the wing. But, and that is a big but, that is not always what you see and the variation in those characteristics can make you wonder at your identification. **[Keep Reading...](#)**

-Susan Setterberg, Volunteer & Board Member, Photos by Virginia Scott

Species Spotlight

Double-crested Cormorant
Phalacrocorax auritus



The Double-crested Cormorant is a gawky, prehistoric-looking bird with a long, dark body and yellowish face. They're a relative of frigatebirds and boobies, and are the most widespread cormorant in North America, and most often seen in or near water. They're commonly spotted while perched on docks, rocks and channel markers after fishing, spreading out their wings to dry. **[Keep Reading...](#)**

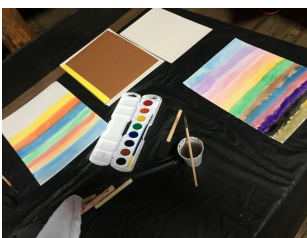
Photo By: https://commons.wikimedia.org/wiki/File:Double-crested_Cormorant_at_Ding_Darling_NWR.jpg

Environmental & Cultural Education Program

Teacher Trainings for 2018 have begun...

Photos: Saturday - January 27, 2018

Our education team kicked off our newly revised Teacher Trainings the past weekend. Our focus this year is on building collaborative partnerships with our formal educators. Their feedback is invaluable in developing education activities that are fun for students and help educators meet teaching standards, such as Since Time Immemorial curriculum and the Next Generation Science Standards. A total of eight educators participated, representing a combined five schools and three school districts.



can connect science, nature, and culture in an all-in-one classroom activity.

A highlight from Saturday? The pigment based paint activity where we substitute chicken yolks for salmon roe and made charcoal based paint. Prior to paint making we reviewed the salmon life cycle, helping teachers see how they

Sessions still open and Clock Hours available! This training will be good for three years. Sessions are held from 10am to 2:30pm on the following dates: February 24th and March 24th. Sign up by emailing ridgefieldeducation@fws.gov. Limited space will be

Your Refuge, Your Way

Let Us Know What You Think!

This area will feature questions regarding particular topics on the Refuge, and what you think about it! Last year, we made an effort to email our members and mailing list every time the Refuge closed, which ended up being quite a few times. Did you appreciate the emails or hate them? Would you like to see a few, but don't need one every time? Let us know! Follow this link here to leave your suggestions: [Closure Announcement Suggestions](#)

To suggest new questions to get your input on, click here: [Question Suggestions](#)

Help Represent the Friends & the Refuge at Community Outreach events!

We are looking for a few dedicated volunteers who love the Refuge and would like to help others

available each day so attending sooner rather than later is suggested. *For on-site Refuge field trips, one teacher each field trip day must have attended one of the orientation days.

2018 School Field Trips

Offered May and June, Tuesdays-Fridays.
Registration for on-site Refuge field trips opens this week!
Applications being accepted **ONLINE ONLY** February 1st through March 15th.

- For information about the **2018 Education and Field Trips- including Classroom Visits, On-Site Visits and REQUIRED Teacher Trainings, click here!**

Ridgefield Refuge Complex News & Events



Ridgefield National Wildlife Refuge

World Wetlands Day at the Oregon Zoo

Join Ridgefield Friends, Ridgefield Refuge Staff and Columbia Gorge Refuge Stewards volunteers as we celebrate World Wetlands Day at the Oregon Zoo! Saturday, February 3rd, visit the Zoo's Education Center to see booths from us and other great partners, listen to talks, watch presentations, crocodile feeding, beaver keeper talk and more! [Check out the schedule and pre-pay for zoo entrance HERE!](#)

Wild in the City Open House March 3rd! (click to view larger)

U.S. Fish & Wildlife Service
NATIONAL WILDLIFE REFUGE SYSTEM

MARCH 3 | 11:00 AM- 4:00 PM

WILD IN THE CITY

800-C NE Tenney Road Vancouver, WA 98685
THREE CREEKS LIBRARY

YOU are invited to join us for this FREE EVENT, as we bring the National Wildlife Refuge System to the City...

Come learn about recreational opportunities and how to get involved at your local National Wildlife Refuge. Staff and volunteers will engage people of all ages in learning about local wildlife, on-going conservation projects, volunteering, and upcoming events in your area. Hands-on activities, informational booths and light refreshments will be provided from 11:00 AM - 4:00 PM, on Saturday, March 3.

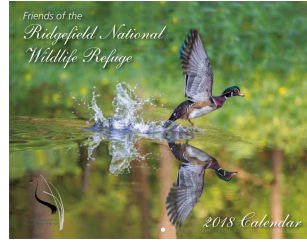
www.fws.gov/refuge/ridgefield

Join us at Three Creeks Library in Vancouver on March 3rd from 11am to 4pm! This free event is focused on bringing the Refuge to the city! Come find out what projects we are working on, how to get involved, and how to support nature and education in your every day lives. And free popcorn!

Thank you for visiting the refuge and supporting conservation. If you have any questions regarding activities and regulations on the refuge, call the office Monday through Friday 7:30am to 3:30 pm at 360-887-4106.

discover what makes this place special. [Learn More...](#)

Need a 2018 Calendar?



The Friends of Ridgefield National Wildlife Refuge's 2018 Calendar is almost gone! This year's calendar features the 2017 winning photos of our annual photo contest!

Just \$15 on sale!

Your purchase helps support our public lands, protecting wildlife and the history of our area, in perpetuity. With gorgeous photos of wildlife and a little learning, what more could you ask for?

Find yours today at [Seasons Coffee Tea and Remedies](#) inside the Old Liberty Theater in downtown Ridgefield, or email us at contact@ridgefieldfriends.org and we can mail you one.

Birding Enthusiasts



See what is being seen at the refuge this week at our [Bird Sightings and Species List](#) page

Our Sponsors

Cathlapotle Plankhouse Update & Events



CATHLAPOTLE PLANKHOUSE

Celebrating Ten Years ▶ 2005 - 2015

Archaeology Roadshow



Photo: Juliet McGraw and Eugene Carrol (Cathlapotle Plankhouse Director and longtime education volunteer).

Each summer the Friends host a booth at the PSU Archaeology Road Show in downtown Portland. It is a truly fun event and a great way to break up the heat of July. This year offered us an additional adventure!

Through support from USFWS Cultural Resources, we were able to take the Cathlapotle Plankhouse on tour. Trade was a perfect theme for 2017 as this was the first time Friends' Plankhouse Programs were shared on the east side of the Cascades. Our booth featured clamons (elk hide armor) and wapato, truly unique Cathlapotle contributions to the intricate Chinookan trade network along the Lower Columbia River.



We hope you enjoy the following short video that showcases the excitement of both the Harney County and PSU Campus locations of the 2017 Archaeology Road Show.

https://www.youtube.com/watch?v=7hnw_sY8Z7A

Questions? Contact Juliet at Juliet_McGraw@fws.gov or call (360) 887-4106



(click link to view the Plankhouse listing)

Preserve America is a national initiative in cooperation with the Advisory Council on Historic Preservation; the U.S. Departments of Defense, Interior, Agriculture, Commerce, Housing and Urban Development, Transportation, and Education; the National Endowment for the Humanities; the President's Committee on the Arts and Humanities; and the



REDFIN

- Clark Public Utilities
- The Columbian
- Corwin Beverages
- Environmental Paper & Print
- Fred Meyer Community Rewards
- National Environmental Education Foundation
- National Fish & Wildlife Foundation
- Parr Lumber
- Pelican Brewing Co.
- Portland Audubon

Donate

Habitat Restoration Updates & Events

January Updates and Upcoming Volunteering Opportunities

January on the Refuge felt more like March with 50 degree days and continuous rain. We can't be sure how most of the resident flora and fauna felt about it, but the deer appear plump and content with an easy winter season. Geese are also benefiting from the mild conditions and continued growth of grass. They are fortunate this year since much of their off-site grazing habitat surrounding the Refuge is quickly being converted to suburbia. **[Keep Reading...](#)**



Now you can sign up to volunteer easily on our website!
[Check it out by clicking here!](#)
[Check out more about Habitat Restoration here!](#)

Questions? Contact Keith_Rutz@fws.gov for more information

Partner Events to Save the Date for:

Tualatin River Bird Festival: May 19th, 2018



The Friends of the Refuge, in conjunction with Tualatin River National Wildlife Refuge, welcome you to our **22nd Annual Tualatin River Bird Festival**. This is a **FREE** family-friendly event! Join the Friends of the Refuge for diverse family-friendly activities celebrating wildlife and wild places.

For more information contact Bonnie Anderson:
Info@FriendsofTualatinRefuge.org
[Check out the Friends of the Refuge's webpage here to stay up to date on this event, and what all is going on in Tualatin!](#)

Big Paddle: June 2nd, 2018

There's something for absolutely everyone on this fun-filled day downtown and on Lake River. Breakfast, paddling, obstacle course, live music, beer & wine garden, BIG games and a Totally Awesome Scavenger Challenge! Registration is already open! **[Check out the schedule HERE, and sign up today!](#)**



Help the Friends and the Refuge When You Shop



When you link your Fred Meyer Rewards Card to the Friends, you help us earn donations from Fred Meyer Community Rewards. It doesn't change your regular personal shopping and fuel rewards, but it does make a meaningful contribution to our work on the Refuge.

It's easy to sign up. Just go to www.fredmeyer.com/communityrewards. You can search for us by our name, **Friends of Ridgefield National Wildlife Refuge**, or by our non-profit number, **89824**. Then, every

time you shop and use your Rewards Card, you are helping the Friends earn a donation to support the Ridgefield National Wildlife Refuge. If you do not have a Rewards Card, they are available at the Customer Service desk of any Fred Meyer store.

Shop and Give Online at AmazonSmile.com



You shop. Amazon gives.

Log on to smile.amazon.com, shop as you usually would and .5% of your purchase will be donated directly to the Friends. Use the special link, smile.amazon.com, with your existing user name and password.

To set up your AmazonSmile account, click this link: <http://smile.amazon.com/ch/91-2018749>. When prompted to select a charity, choose the **Friends of Ridgefield Wildlife Refuge**. Begin shopping as you normally would and the Friends will receive 0.5% of eligible purchases.

Or Shop Online and Give through Giving Assistant



Giving Assistant makes it easy to donate to Friends of the Ridgefield National Wildlife Refuge! Simply shop online, earn cash back, and donate as much as 30% of your purchase price—Giving Assistant facilitates the whole process.

Now, you can help change the world for free while saving money at over 3,000 popular online retailers like Home Depot, ULTA, and Macy's! [Start HERE!](#)

Thanks for being an EcoShopper and helping the Refuge!

Follow the Friends on Facebook, Twitter and Instagram!

Want regular updates on Refuge events and happenings? Follow the Friends on your favorite social media by clicking the logos below to stay connected even when you are off the Refuge.



Header Photo Credit: Marguerite Hills

Would you like to forward this email to a friend? [Click here.](#)

Share This Email:

[Remove my name from all future email correspondence](#)

Address postal inquiries to:
Friends of Ridgefield National Wildlife Refuge
PO BOX 1022
Ridgefield, WA 98642
Powered By

Blackbaud eTapestry™ Delivra