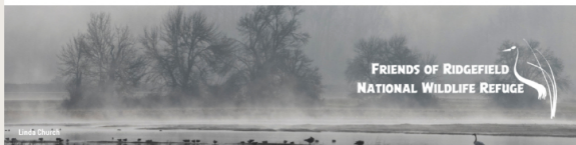


[View as Webpage](#)Please add contact@ridgefieldfriends.org to your address book or safe senders list.

You are receiving this email because you are either a member or signed up for our mailing list.

**FRIENDS OF RIDGEFIELD
NATIONAL WILDLIFE REFUGE**

Linda Church

Image credit: Linda Church, 2023, Honorable Mention Landscape Category, Pro Photo Supply Refuge Photo Contest

The Friends of Ridgefield National Wildlife Refuge

The latest updates | November 2024

Refuge Open Hours:

7:30 am - 6:30 pm*

*Times change quickly this time of year, check the website before heading out!

You can enter both RNWR units by paying an Entrance Fee or using an eligible Entrance Pass.

Youth 15 and under are always free.

Please note: Bicycles, off-road vehicles, & ATV driving are not permitted on the Refuge.

Entrance Fee:

- Online: **NEW!** Easily pay your entrance fee (or purchase an entrance pass) *before* you visit, by using recreation.gov.
- In-Person: \$3.00 daily per vehicle, or up to four adults on foot. Cash or check only (or scan a QR code on-site, for now).

Entrance Pass Options:

- Online: **New!** Easily buy an Annual Pass *before* you visit, using recreation.gov.
- In-person (or by mail): Purchase An Annual Refuge Pass or eligible Federal Lands Pass.
 - \$15.00 for an Annual Ridgefield NWR pass. Purchase at Ridgefield NWR Admin Office, M-F, 8:00 am - 4:00 pm; by mail; or place cash/check in an official fee envelope. Complete details [HERE](#).
- **Become a Friends Member at \$60 or above.**
 - [Join here!](#) Opt-in when joining, and an Annual Refuge Pass will be mailed to you.
- Use your current Federal Lands Pass. [Check HERE](#) to see the list of eligible passes. Note: State Passes are *not valid for entry to the Refuge.

The Ridgefield NWR Admin Office is open weekdays, 8:00 am - 4:00 pm.

Office phone number: 360-887-4106.

-To verify staff availability, please call the office before you visit the Refuge.

-For general inquiries, please call the office between 8:00 am - 4:30 pm.

RIDGEFIELD NATIONAL WILDLIFE REFUGE**RIVER 'S' UNIT & CARTY UNIT**

1071 S Hillhurst AVE

Auto Tour Route

Kiwa Trail

28308 NW Main AVE

Admin Office

Walking Trails

Cathlamet Plankhouse

Ridgefield National Wildlife Refuge Complex News

November 11 is the last fee-free day of 2024, in honor of Veterans Day and all who have served. Visit Ridgefield National Wildlife Refuge - or other public lands, refuges, and national parks that usually accept fees - for free on Monday, November 11, 2024!

For more information: [the FWS Website HERE](#)

Prescribed Fire at Ridgefield a Success!

The Ridgefield National Wildlife Refuge conducted four successful prescribed fires on Bachelor Island, totaling 68 acres on Sept. 30, 2024, to manage habitat for wintering waterfowl and Sandhill Cranes. Prescribed fires are a multi-agency effort with 25 individuals participating,

representing staff from the Olympic National Forest, Olympic National Park, Washington Department of Natural Resources, and the U.S. Fish and Wildlife Service. In all, five wildland fire engines, two UTVs, a water tender, and several support vehicles were involved to implement the fires.... [Keep Reading...](#)

-Eric Anderson, Ridgefield National Wildlife Refuge Deputy Refuge Project Leader
Image: Laying down the Fire Line, credit USFWS

From the Friends Get a 2025 Calendar, today!

Snag your fabulous 2025 Calendar today! These stunning beauties showcase the dazzling winners of the Pro Photo Supply Ridgefield NWR 2024 Photo Contest—all for just \$18.00!

Together, we can make a difference in preserving these precious habitats. So why wait? Buy your calendar today and let the beauty of Ridgefield inspire you all year long!

[Start Shopping, HERE](#)

Welcome to the Board, Abby Braithwaite!

Abby lives with her husband David



Morgan and their two children on Plas Newydd Farm, the Refuge's neighbor to the north. Abby hosts the Plas Newydd Farm Arts Initiative, which - working in tandem with the farm's agriculture and conservation missions - aims to

celebrate the land and tell the story of the changing landscape through the eyes of artists and writers from across the region. Abby is a writer and a mom, and brings an awareness of disability access and equity to the board, as well as a deep sense of the importance of story in connecting the community to the landscape.

Abby says, "I'm excited to join the Friends and help promote this incredible resource in our community and beyond. Many outside Ridgefield know our town due to the Refuge, and I want to ensure everyone nearby can explore its landscape and wildlife. My goal is to build a lasting connection that allows the Friends to support the Refuge in engaging people with nature." We are beyond excited to have her join our team, welcome again Abby!

image: Abby Braithwaite sits outdoors holding a book and smiling at the camera

Are you a fan of Ridgefield National Wildlife Refuge? Want to make a difference for wildlife and for people? We are still looking for driven individuals to join our Board of Directors! Your role would involve guiding our fundraising initiatives, maintaining strong board governance, and representing the lively community connected to our cherished refuge. Your skills and commitment can have a profound influence on safeguarding this valuable habitat for future generations.

FRIENDS OF RIDGEFIELD NATIONAL WILDLIFE REFUGE 

Interested? Do you know someone who might be a good fit? Let's chat! Email us to explore how to help preserve this natural treasure.

Contact Us to Get Started

Thank You City of Ridgefield Proclaiming National Wildlife Refuge Week & Lights Out for Birds 2024



On October 10, [Mayor Onslow proclaimed October 13-19, 2024, as "Wildlife Refuge Week"](#) in Ridgefield, encouraging residents to explore Ridgefield NWR and support the [Friends of Ridgefield National Wildlife Refuge!](#)

National Wildlife Refuge Week celebrates the great network of lands and waters that conserves and protects America's precious wildlife heritage. Established in 1965, Ridgefield NWR protects vital habitats for species like the Dusky Canada Goose and Sandhill Cranes. Thanks to ongoing restoration and preservation of critical habitats and partnerships with local community and other refuges, populations of endangered species like the Dusky Canada Goose, Sandhill Cranes, Columbian White-tailed Deer, and even Oregon White Oaks are making a comeback. If you have ever seen a hummingbird in your yard or watched an Eagle soar overhead, you can thank the Refuge for protecting their nesting spaces, and for attracting migrating birds on their long journeys each migration season.

image: Samantha Zeiner shakes Mayor Onslow's hand while accepting the proclamation on Oct 10.

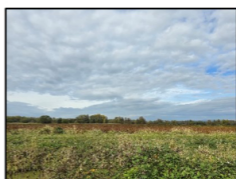
On October 24, [Mayor Onslow also proclaimed "Lights Out for Birds" in the City of Ridgefield!](#) The Friends and the Refuge, in collaboration with the City of Ridgefield, have been working alongside our local Dark Sky International Representative for several years. This additional outreach and endorsement from the City significantly boosts our ability to engage with the community. Ridgefield is not just adjacent to a Refuge; it serves as a gateway to it, frequently acting as a passage for diverse wildlife, both on land and in the air.

Thanks to this partnership with DarkSky International, the new construction at Ridgefield National Wildlife Refuge, including the completed Administration Building and the upcoming Nature Center, adhere to [DarkSky principles](#). This involves turning off both exterior and interior lighting at night and directing security lighting downwards. We encourage citizens to assist by reducing skyglow [in several ways](#). One is turning off unnecessary exterior lights after 11 PM, especially during migration seasons in the Spring and Fall. This simple action can support wildlife and potentially enhance the overall well-being of our community.

Thank you so much, Mayor Onslow, for the recognition!

From the Contact Station (it's back!) Ah, Fall.

A frequent comment from visitors of late is "It is so dry." Since the River S is behind a dike, the water comes from above or is pumped in from the slough off the Columbia River. So far this month (to Oct 24) at the Ridgefield weather station we have measured 2.27 inches, Sept was 1.18 inches



(Reference: Weather Underground). Clark County's ten-year average for October is 8.9 inches. So, Mother Nature isn't helping us a lot to fill the lakes and ponds around the River S as we move into Fall. With water levels also low in the Columbia River, pumping only works when tides are...[Keep Reading...](#)

-Susan Setterberg, Ridgefield National Wildlife Refuge Contact Station Volunteer
image: Wetlands looking dry, fall 2024, by Susan Setterberg

Vancouver Audubon News



Vancouver Audubon's World Migratory Bird Day bash on October 12 was a total hit! Swing by their newsletter for all the details, plus, you'll find a special spotlight on the Big Sit at Ridgefield NWR's River 'S' Unit from October 13, and a fun recap of our own BirdFest & Bluegrass from October 5: [Vancouver Audubon Society Newsletter](#)

Birding Enthusiasts



Ridgefield First Saturdays Make a Difference Month November, 2024

Get involved in your community to Make a Difference! Connect with non-profits, develop positive community habits, practice kindness, and be a part of what makes Ridgefield

Check out what species are being seen on the Refuge [here](#).

unique.

[Find Dates for Volunteer Opportunities, Activities, & more!](#)

Stay Involved:

Benefits of Friends Membership



Join the Friends of Ridgefield National Wildlife Refuge in their mission to promote the enjoyment, understanding, and protection of native and endangered birds, other wildlife, and their habitats. We focus on our local community and the Pacific Northwest.

And now, we've teamed up with Zeffy to dodge those pesky platform fees, making sure every bit of your generosity goes straight to the Refuge. Sign up today, and get a new digital membership card to use around town for discounts, special offers, and more!

[Learn More & Join the Friends Today!](#)

Support While You Shop



Friends Amazon Wishlist- You can directly support our work and the Refuge's initiatives! Whether it's habitat restoration or BirdFest & Bluegrass, we'll feature items essential to our many efforts toward achieving conservation and community outreach goals. Purchase from our list, and Amazon takes care of the rest! [Get started, HERE.](#)



When you link your Fred Meyer Rewards Card to the Friends, you help us earn donations from Fred Meyer Community Rewards. It's easy to sign up. [Just click here.](#) Or search, Friends of Ridgefield NWR #PK822

Friends Online Store



Check out our online store to find the Chinookan Steller's Jay design, BirdFest & Bluegrass button art, and the 2024 Photo Contest winning images, on tote bags, sweatshirts, t-shirts, different mug styles, and photo cards!

[Start Shopping](#)

Psst...if you love a good jigsaw puzzle...

[Click Here for Puzzles!](#)

Friends Board Meetings

Join the Friends of Ridgefield NWR Board for their monthly meeting. Meetings start at 5:00 PM every second Monday of the month and will be virtual, or in-person with a virtual option. [Contact us](#) to join in!



Board Meeting Dates:
November 11
December 9

Become a Business Alliance Member

As a member of the Friends of the RNWR Business Alliance, you invest in one of our urban metropolitan area's most unique and diverse natural and cultural resources. [Find out more](#)

Sponsors:

Business Alliance Members:

In-Kind Support:

BirdFest & Bluegrass:

Granting Organizations & Partners:



FRIENDS OF RIDGEFIELD NATIONAL WILDLIFE REFUGE

[Contact Us](#) | [Website](#)

Want regular updates on Refuge events & happenings? Follow the Friends on social media by clicking the logos below to stay connected even when you are off the Refuge.



Friends of Ridgefield National Wildlife Refuge | PO BOX 1022 | Ridgefield, WA 98642 US

[Unsubscribe](#) | [Update Profile](#) | [Constant Contact Data Notice](#)



Try email marketing for free today!