

Please add contact@ridgefieldfriends.org to your address book or safe senders list.

The Friends of the Ridgefield National Wildlife Refuge

The latest updates | July, 2019



Save the Date!



Join the Friends of Ridgefield National Wildlife Refuge for our BirdFest & Bluegrass 20th Anniversary Celebration at the Ilani Casino & Resort, Friday, October 4th, 2019.

There will be food, drinks, and a silent auction!

More info to come, stay tuned. (*click the postcard to view larger or download*)

We look forward to kicking off this milestone festival with you! To stay up to date on the Festival itself, [click here!](#)

Want to sponsor this landmark celebration, or the Festival?

[Contact us!](#)

Become a BirdFest & Bluegrass Vendor

Celebrate the 20th Anniversary of BirdFest & Bluegrass with us! Taking place October 5th, BirdFest is our local celebration of the return of the Sandhill Cranes to the Refuge. Events include Sandhill Crane tours, guided nature and bird walks, children's activities, Cathlapotle Plankhouse tours, naturalist workshops, and the Birder's Marketplace, which features artists who concentrate on wildlife and/or nature themes. BirdFest attracts 3,000 - 5,000 people annually, and we expect this year to be a record-breaker!



Please note that this year the Birder's Marketplace will only be open for ONE DAY on Saturday, October 5th. The Marketplace will not be open on Sunday, October 6th.

The Marketplace will also have a new location! Join us in the brand new, centrally-located Ridgefield Administrative and Civic Center (RACC) gym (510 Pioneer St, Ridgefield, WA 98642). This location is right next door to where several of our biggest events of the festival are taking place. Or, join the Saturday Market and food vendors at Overlook Park!

[Find out more or apply today here!](#)

2019 Ridgefield National Wildlife Refuge Photo Contest



Submit your favorite nature images taken within the boundaries of the Ridgefield National Wildlife Refuge to the 13th Annual 2019 photography competition!

Submit by: September 3, 2019

ADULT CATEGORY PRIZES:
1st & 2nd Place in each category

Categories:

- **Birds** - Birds and waterfowl in their natural habitat.
- **Wildlife** - Any wildlife other than birds - mammals, amphibians, fish, insects, reptiles, and invertebrates in their natural habitat.
- **Plant Life** - Trees, grasses, flowers, fungi, lichen, and other flora in their natural habitat
- **Landscape & Structures** - The refuge contains a mosaic of scenic views, including iconic structures such as the Cathlapotle Plankhouse.

YOUTH PRIZES: 1st, 2nd, 3rd Place

[Find out more...](#)

Ridgefield Refuge Complex News & Events

River 'S' and Trail Closures

Stay up-to-date on all the projects going on this year at the official [Refuge 20/20 website](#), where all the projects at Ridgefield and Steigerwald Lake NWRs are explained. More info added all the time - check back for updates and more!



NOTE: The River 'S' Unit and Auto Tour will remain closed Thursday, July 4th.

Currently:

-- ***UPDATE***: The Main Street Extension project will impede traffic to the Carty Unit and the Refuge office (28908 NW Main Ave) starting July 5th, 2019. Access the unit from the freeway by using the roundabout to get left onto N Royle, then turn left onto 289th, and follow that as it turns into 291st, then Main Ave. The Refuge will be on your right.

- The River 'S' Unit and Auto Tour Route (1071 S Hillhurst Rd.) are closed Monday-Friday for bridge construction; open Saturdays and Sundays until summer 2020.

- The Oaks-to-Wetlands Trail (28908 NW Main Ave.) starting at the end of the paved section will be closed for our Oak Restoration Project into July 2019. Opening soon!

Please contact the Refuge Office at (360) 887-4106 during regular business hours (M-F, 7:30 AM - 3:30 PM) for more information.

Thank you for visiting the Refuge and supporting conservation. If you have any questions regarding activities and regulations on the Refuge, call the office Monday through Friday 7:30 am to 3:30 pm at 360-887-4106.

U.S. Fish & Wildlife Service

Ridgefield National Wildlife Refuge Improvements

2019 Schedule of Temporary Disruptions



Auto Tour Bridge Replacement

Where: Ridgefield NWR River S Unit

When: March 18, 2019 through July, 2020

What: The bridge over Lake River to the Auto Tour Route will be closed Monday through Friday, re-opening on the weekends during construction of a new two-lane bridge.

Planning a visit?
check ahead



YOUR #1 INFO RESOURCE
www.refuge2020.info

ALSO CHECK OUT

facebook.com/Portland-VancouverNationalWildlifeRefuges

fws.gov/refuge/Ridgefield

fws.gov/refuge/Steigerwald_Lake

Oak Woodland Restoration

Where: Ridgefield NWR Carty Unit

When: March 18, 2019 until approx. June 2019

What: The Oaks-to-Wetlands Trail, north of the Oak Overlook, will be closed during coniferous tree removal. The trail may remain closed until June for safety monitoring of falling debris.

Main Street Sidewalk Extension

Where: Main Street near Ridgefield NWR Carty Unit

When: March to October 2019

What: Main Street will be reduced to one lane at Gee Creek starting March 2019. From July to August both lanes will be closed at Gee Creek and a detour will be in place to access the Refuge.

REFUGE 2020

Learn more about these projects at www.refuge2020.info



Refuge 2020 is a collaborative effort of The Friends of Ridgefield National Wildlife Refuge, the Columbia Gorge Refuge Stewards, and the U.S. Fish & Wildlife Service. Our purpose is to keep you informed about the many wildlife habitat and public access improvements that will be completed or underway by the year 2020 at Ridgefield and Steigerwald Lake National Wildlife Refuges.

(click flyer to view larger or download)

Bird Walks

Birding at Steigerwald Lake NWR
Meet at the Gibbons Creek trailhead off SR-14 at the time listed. Walks last two to three hours. There is no entrance fee at Steigerwald.

Hike led by Ken Pitts, starting at 7:00 AM
Saturday, July 13
Saturday, July 27
Saturday, Aug 10
Saturday, Aug 24

[Click here to learn more about the Steigerwald Lake Refuge and trail.](#)

U.S. Fish & Wildlife Service



BIRD WALKS
AT RIDGEFIELD NAT'L WILDLIFE REFUGE COMPLEX

UPCOMING DATES

The following hikes are led by Ron Escano & Ken Pitts. They start at 8 AM at the respective trail head and last two to three hours.

While these guided walks are free, the entrance fee to Ridgefield NWR of \$3.00/ carload per day, does apply. Steigerwald Lake NWR has no day-use fee. Space is limited.

To Register, email Mesha_Wood@fws.gov or call Ridgefield Office at 360-887-4106

RIDGEFIELD NWR
Oaks to Wetlands Trail (Carty Unit off Main)
Birding with Ron Escano:
 - May 11
 - June 1

Please Note: The trail beyond the Oak Overlook will be closed while oak restoration work is completed during these walks.

Kiwa Trail
(River 'S' Unit, off Hillhurst)
Birding with Ron Escano:
 - May 4
 - May 25
 - June 15

STEIGERWALD LAKE NWR
Gibbons Creek Wildlife
Art Trail (off SR-14)
Birding with Ron Escano:
 - March 23
 - April 27
 - May 18
 - June 8

Gibbons Creek Wildlife
Art Trail (off SR-14)
Birding with Ken Pitts:
 - March 30
 - April 13
 - May 11
 - May 25

Events hosted by the Gorge Refuge Stewards and the Ridgefield National Wildlife Refuge Complex. The U.S. Fish and Wildlife Service is committed to providing access to the event for all participants. Please direct all requests for sign language interpreting services, closed captioning, or other accommodations needs to Mesha_Wood, Mesha_Wood@fws.gov, 360-887-4106, TTY 360-887-4106 with your request by close of business one week before the event.

www.fws.gov/refuge/Ridgefield

From the Contact Station

It's the cute season again

It is hard to stop yourself from gushing over our baby birds this time of year. Watching them closely minded by parents as they move around in the wetlands just brings a smile to your face. They do grow fast though. They are quite distinct in plumage, such as it is, when first leaving the nest, but you can see changes in looks and behavior over days, if you can spot them. See if you can...[Keep Reading...](#)



-Susan Setterberg, Contact Station Volunteer & Board Past President

Cathlapotle Plankhouse Updates & Events

Cathlapotle Plankhouse July Second Sunday - Tending the Wild with Fire



July 14, 12:00 PM - 4:00 PM
Event free with \$3.00 per vehicle
Refuge admission

**12:00 PM - 4:00 PM Plankhouse
Tours and Activities**
Docent or self-led Plankhouse tours
and family-friendly activities
throughout the day.

1:00 PM Tending the Wild with Fire
Join us as Savanha Jackson (Modoc/Klamath/Hoopa/Washoe) shares
indigenous land management practices on how her People have worked
with fire and oaks Since Time Immemorial.



3:00 PM Naturalist-led Walk-n-Talk

Walk on the ethnobotany portion of the Oaks to Wetlands Trail. Participants meet in front of the Plankhouse, be prepared for a 45-minute walk over moderately even terrain.

Cathlapotle Plankhouse: 28908 NW Main Ave, Ridgefield, WA 98642
(click flyer to view larger or download)



Preserve America is a national initiative in cooperation with the Advisory Council on Historic Preservation; the U.S. Departments of Defense, Interior, Agriculture, Commerce, Housing and Urban Development, Transportation, and Education; the National Endowment for the Humanities; the President's Committee on the Arts and Humanities; and the President's Council on Environmental Quality.

Habitat Restoration Updates & Events

Sunshine on the Mind

Summer is here and even though access to the River 'S' is limited, habitat restoration efforts continue on. Ricefield Bulrush continues to threaten our wetlands, and as the pace of the bridge construction evens out, we can begin working more regular hours with new volunteers again. Dates and contact info to sign up are on the flyer, join us to search out and remove this invasive species!

Work is set to begin on the building of the High Tunnel hot house this July, where native plants will be grown for planting on the Refuge. This reduces the chance of invasive species introduction, and provides a sustainable resource. We want to thank everyone again who donated to make this project possible!



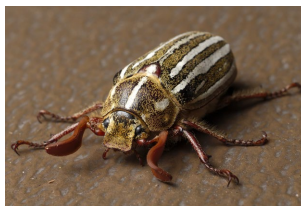
Make your own mark on habitat restoration efforts and support us today. (click flyer to view larger or download)

Now you can sign up to volunteer on our website!
Check it out by clicking here!

General Habitat Questions? Contact Keith Rutz or contact us for more information.

Species Spotlight

Ten-lined Giant Chafer
Polyphylla decemlineata



Sometimes referred to as a Watermelon Beetle, the Ten-lined Giant Chafer, a type of scarab beetle, is most well known as a June Beetle around here (or Ten-lined June Beetle). These beetles are attracted to light and leaves, so this time of year is when people are seeing them out and about.... Keep Reading...

Friends Board Seeking Committee Members

The Friends of the Ridgefield National Wildlife Refuge is seeking community members to join our committees! If you are interested in helping out the Friends but don't have time to commit to being a board member, this is a great way to get involved. Maybe you have a talent you want to share, or want to help give the Friends a little extra support - whatever the reason, we are happy to have you join us!

We are looking for support in these committees:

- Finance
- Grants
- Fundraising
- BirdFest Committee

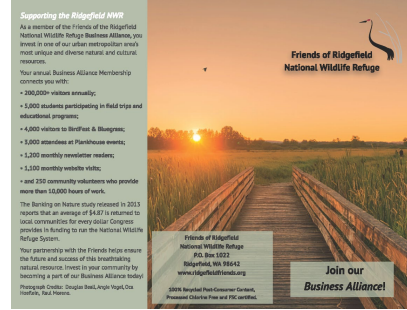
Please email alix@ridgefieldfriends.org with your interest!



Seeking Business Alliance Members

As a member of the Friends of the Ridgefield National Wildlife Refuge Business Alliance, you invest in one of our urban metropolitan area's most unique and diverse natural and

cultural resources. [Click here to find out more!](#)



Calling All Volunteers!

Volunteer Opportunities:

Refuge and Trail Greeters

Over 120,000 visitors flock to the Refuge annually to enjoy nature through participation in wildlife observation, photography, environmental education, cultural interpretation, hunting, and fishing.

Volunteers help to make their experiences meaningful. Share your enthusiasm for nature and make the Refuge a welcoming place for people walking our trails, stopping at the Visitor Contact Station and driving the AutoTour.

Volunteers naturalists needed to walk trails and teach people about what they can see and enjoy at the Refuge this spring and summer!

If you are interested email RidgefieldVolunteer@fws.gov to be put on the update list for a late spring training.

Cathlapotle Plankhouse

The Cathlapotle Plankhouse draws thousands of visitors to the Refuge each year. Help share the legacy of the Indigenous people who have tended to this place since time immemorial as a Plankhouse Docent or Cultural Educator. Field trips take place during the weekdays. Docents staff the house on weekends from April - September.

To get on the list for more information as it comes out, email RidgefieldEducation@fws.gov with the subject line "New Plankhouse Volunteer"

Support the Friends

Help us inspire people to support the Refuge! Whether you help us out during BirdFest & Bluegrass in October by giving directions or helping set up, or by providing outreach for what the Friends do, or joining the board or a committee, every little bit helps.

Now you can sign up to volunteer easily on our website!

[Check it out by clicking here!](#)

[Learn more about volunteering at Ridgefield National Wildlife Refuge here](#)

Birding Enthusiasts



Check out what species are being seen on the Refuge [here](#).

Ridgefield First Saturday: Homecoming & Spudder Fest July 6, 2019



Invite and meet Ridgefield High School Alumni and long term Ridgefield residents who are returning for the festivities. Enjoy "Spudder" inspired games, potato food choices, a Ridgefield-Family photo, and MORE!

[Full Schedule Here](#)

Donate

Benefits of Membership



Discounts at local businesses for new and renewing members! Would you like to enjoy a cup of coffee from Ridgefield's Seasons after a morning hike on the Refuge? Lunch at Vinnie's Pizza in-between the River 'S' and Carty Units? Dinner and drinks at the Historic Sportsman's Restaurant and Lounge after a busy day of wildlife viewing (5% off a meal with member card!)? Or maybe you would like to get a discount on some supplies at Shorty's or Backyard Bird Shop? How about a night out at Ilani? Find out more, become a Friend, or renew your membership today and receive a member card with great discounts at these wonderful local businesses! Feel free to [contact us](#) for any questions or inquiries.

The Friends of the Ridgefield National Wildlife Refuge promote the enjoyment, understanding, and protection of native and endangered birds, other wildlife, and their habitats. We focus on our local community and the Pacific Northwest. Visit us on the web at www.ridgefieldfriends.org

Support the Friends While You Shop



When you link your Fred Meyer Rewards Card to the Friends, you help us earn donations from Fred Meyer Community Rewards. It doesn't change your regular personal shopping and fuel rewards, but it does make a meaningful contribution to our work on the Refuge. It's easy to sign up. [Just click here.](#) You can search for us by our name, Friends of Ridgefield NWR, or by our non-profit number, PK822.

Then, every time you shop and use your Rewards Card, you are helping earn a donation to support the Friends and Ridgefield NWR. If you do not have a Rewards Card, ask at the Customer Service desk of any FM store.



Log on to smile.amazon.com and shop as you usually would - .5% of your purchase will be donated directly to the Friends! Use the link with your existing user name and password. When prompted to select a charity, choose the Friends of Ridgefield Wildlife Refuge.



Giving Assistant makes it easy to donate to Friends of the Ridgefield National Wildlife Refuge! Simply shop online, earn cash back, and donate as much as 30% of your purchase price - Giving Assistant facilitates the whole process. Now, you can help change the world for free while saving money at over 3,000 popular online retailers like Home Depot, ULTA, and Macy's! [Start HERE!](#) Thanks for being an EcoShopper and helping the Refuge!

Want regular updates on Refuge events and happenings? Follow the Friends on your favorite social media by clicking the logos below to stay connected even when you are off the Refuge.

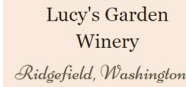


Sponsors

Business Alliance Members:



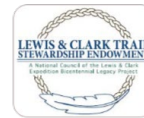
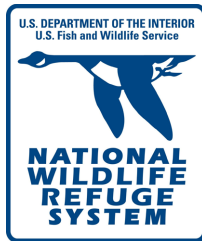
In-kind Support:



BirdFest & Bluegrass:



Granting Organizations & Partners:



Header Photo Credit: Oca Hoeflein, 2nd Place Landscape Category, 2018 Refuge Photo Contest

Would you like to forward this email to a friend? [Click here.](#)

Share This Email:    

[Remove my name from all future mass email communications.](#)

Address postal inquiries to:

Friends of Ridgefield National Wildlife Refuge

PO BOX 1022

Ridgefield, WA 98642

Powered By

Blackbaud eTapestry™ **Delivra**