

Please add contact@ridgefieldfriends.org to your address book or safe senders list.

The Friends of the Ridgefield National Wildlife Refuge

The latest updates | December, 2019



Giving Tuesday, December 3rd, 2019

"I've been coming to the Refuge River 'S' Unit since I could walk. This unit has held a special place in my heart for 28 years. It's where I've come to bond with my dad about the great pictures we have taken, to the indescribable moments I've had seeing wildlife that has gone missing in our urban areas. The Cathlapotle Plankhouse is a beautiful structure that represents a resilient culture that thrives to this day and I've been honored to volunteer here. Thank you for everything you do." - Katie Akers



You can help support the Friends of the Ridgefield National Wildlife Refuge by making a donation this Giving Tuesday! By donating to the Friends, you get to support a group of hardworking dedicated volunteers, staff, and supporters who work diligently to make the distinctive programs of Ridgefield National Wildlife Refuge come to life. Donate to the Friends on our website or Facebook (**donations made on Facebook during #GivingTuesday are all matched!**), become a member or renew, or sign up to volunteer. Because every little bit makes a difference.

We hope to raise \$3,500 during #GivingTuesday to support our Habitat Restoration and Cultural & Environmental Education programs. \$3,500 would help us complete the Oak Restoration Project on the Carty Unit! Give your tax-deductible gift on December 3rd and support our work. Bookmark our [website here](#), or [Facebook here](#), and Save the Date for December 3rd!

Save the Date!



January Member Dinner

Save the Date! The January Member Dinner will be Saturday, January 25th, 2020! This annual event is to celebrate and honor our members and volunteers for all their hard work, support, and dedication all year long.

More information, including location and time, coming soon, stay tuned!

Get Your 2020 Photo Contest Calendars!

View the 2019 Ridgefield National Wildlife Refuge Photo Contest Winners in this stunning collection.

Just \$18 - 8.5x11 size, with a bonus contest photo!

Highlights important Refuge dates, Fee Free days, as well as seasonal habitat reminders and events. Funds support Habitat Restoration, Environmental & Cultural Education, and other Refuge programs and events.

Buy them online here!

XL size for \$22.00, and choice of binding also available online.

Buy them in-store at select local locations, including:

Seasons Coffee, Tea & Remedies in the Old Liberty Theater

& Ridgefield Hardware, and at Hometown Celebration, Saturday, December 7th!



Don't Forget to Support While You Shop This Holiday Season!



When you link your Fred Meyer Rewards Card to the Friends, you help us earn donations from Fred Meyer Community Rewards. It doesn't change your regular personal shopping and fuel rewards, but it does make a meaningful contribution to our work on the Refuge. It's easy to sign up. [Just click here.](#) You can search for us by our name, Friends of Ridgefield NWR, or by our non-profit number, PK822.

Then, every time you shop and use your Rewards Card, you are helping earn a donation to support the Friends and Ridgefield NWR. If you do not have a Rewards Card, ask at the Customer Service desk of any FM store.



Log on to smile.amazon.com and shop as you usually would - .5% of your purchase will be donated directly to the Friends! Use the link with your existing user name and password. When prompted to select a charity, choose the Friends of Ridgefield Wildlife Refuge.



Giving Assistant makes it easy to donate to Friends of the Ridgefield National Wildlife Refuge! Simply shop online, earn cash back, and donate as much as 30% of your purchase price - Giving Assistant facilitates the whole process. Now, you can help change the world for free while saving money at over 3,000 popular online retailers like Home Depot, ULTA, and Macy's! [Start HERE!](#) Thanks for being an EcoShopper and helping the Refuge!

From the Refuge

What a year 2019 has been!



So many projects are bringing growth and improvement to the Refuge for both wildlife and people. With the help of the Cowlitz Indian Tribe we took out 600 Douglas fir trees to start the process of restoring 32 acres of Oregon white oak habitat. We have partnered with the Washington Trails Association to reset over a mile of trail, highlighting this unique and important ecosystem. A completely new two-lane bridge is almost finished, and will soon deliver over 100k visitors a year to the River 'S' Unit. A new culvert, bridge, and sidewalk is being placed on Main Avenue to provide safe passage to and from the Refuge for both fish and people. All

that in addition to the regular annual cycle of tasks to create healthy habitat for wildlife, and those of us that thrive on being around it.

So why did we have to do this all at once? The answer simply is ... This is just the way things fell into place. The initial achievement of being able to plan and start implementation on each of these critically important projects was in itself something to celebrate. Going into each one, staff had to decide how to work around our community of visitors and what would have to be sacrificed to get things done. A delicate balance of compromise was worked on in an effort to give every user group access. These compromises ultimately made things more complicated for staff and even extended the timelines, but it was important to us that people were still able to visit.

So as we close up 2019, I hope you are poised to celebrate with us. You have supported us through the most chaotic time I have



seen Refuge staff go through in my 13 years of working here. We thank you for your patience, your understanding, and your vision for a greater future for wildlife and recreation in your community. We are in the home stretch!

- Josie Finley, Visitor Services Manager Ridgefield NWR
- Construction Photos courtesy of USDOT, Federal Highway Administration



Ridgefield Refuge Complex News & Events

River 'S' and Trail Closures

Stay up-to-date on all the projects going on this year at the official [Refuge 20/20 website](#), where all the projects at Ridgefield and Steigerwald Lake NWRs are explained. More info added all the time - check back for updates and more!



Currently:

-- ****UPDATE:** The River 'S' Unit and Auto Tour Route (1071 S Hillhurst Rd.) Additional Temp Closure****

The River 'S' Unit/AutoTour of the Refuge will be closed to ALL PUBLIC ACCESS Sunday - Friday, through December 2019 due to the inability to provide safe access across the Lake River bridge. A professional flagger will be provided to assist with crossing on Saturdays only. We apologize for this construction closure and look forward to opening fully on weekends in January.

-- The Main Street Extension project will continue to impede traffic to the Carty Unit and the Refuge office (28908 NW Main Ave) through October 5th and BirdFest. Access the unit from the freeway by using the second roundabout to go right onto N Royle, then turn left onto 289th, and follow that as it turns into 291st, then Main Ave. The Refuge will be on your right. Maps are available on the home

U.S. Fish & Wildlife Service

Ridgefield National Wildlife Refuge Improvements

2019 Schedule of Temporary Disruptions



Auto Tour Bridge Replacement

Where: Ridgefield NWR River S Unit

When: March 18, 2019 through July, 2020

What: The bridge over Lake River to the Auto Tour Route will be closed Monday through Friday, re-opening on the weekends during construction of a new two-lane bridge.

Planning a visit?
check ahead



YOUR #1 INFO RESOURCE
www.refuge2020.info

ALSO CHECK OUT

facebook.com/Portland-VancouverNationalWildlifeRefuges

fws.gov/refuge/Ridgefield

fws.gov/refuge/Steigerwald_Lake

Oak Woodland Restoration

Where: Ridgefield NWR Carty Unit

When: March 18, 2019 until approx. June 2019

What: The Oaks-to-Wetlands Trail, north of the Oak Overlook, will be closed during coniferous tree removal. The trail may remain closed until June for safety monitoring of falling debris.

Main Street Sidewalk Extension

Where: Main Street near Ridgefield NWR Carty Unit

When: March to October 2019

What: Main Street will be reduced to one lane at Gee Creek starting March 2019. From July to August both lanes will be closed at Gee Creek and a detour will be in place to access the Refuge.

REFUGE 2020

Learn more about these projects at www.refuge2020.info



Refuge 2020 is a collaborative effort of The Friends of Ridgefield National Wildlife Refuge, the Columbia Gorge Refuge Stewards, and the U.S. Fish & Wildlife Service. Our purpose is to keep you informed about the many wildlife habitat and public access improvements that will be completed or underway by the year 2020 at Ridgefield and Steigerwald Lake National Wildlife Refuges.

page of our website.

-- The Oaks-to-Wetlands Trail (28908 NW Main Ave.) starting at the end of the paved section is now open! Keep in mind this is a primitive trail that is not complete or permanent yet.

Please contact the Refuge Office at (360) 887-4106 during regular business hours (M-F, 7:30 AM - 3:30 PM) for more information. (click flyer to view larger or download)

Thank you for visiting the Refuge and supporting conservation. If you have any questions regarding activities and regulations on the Refuge, call the office Monday through Friday 7:30 am to 3:30 pm at 360-887-4106.

From the Contact Station

Counting the Birds in Fall



We all can't wait for the bridge project to be done, or at least enough of it so we can get to our wonderful refuge and enjoy the wintering birds more frequently. Each November there is a team of volunteers who start the goose counts. We meet twice a month until April. We spread out over the Refuge counting all sections except the Carty Unit. We started counting on November 13th this year. It was a bit harrowing getting onto the refuge as the construction crews were working and trenching across the entry road at the west end of the bridge. My first hint of the trench, after driving through the thick mud lake on the east of the RR tracks and giving earthmoving equipment the right of way, was seeing a man with just shoulders and helmeted head above ground ...[Keep Reading...](#)

- Susan Setterberg, Contact Station Volunteer & Board Past President
- Photo: Roger van Gelder, Adult Honorable Mention 2016 Refuge Photo Contest Winner

Cathlapotle Plankhouse Updates & Events

Cathlapotle Plankhouse in the Winter



Greetings All. Over the past few weeks I've been afforded the time to get out of the office and into the Plankhouse more often. This means I've been gifted with the music of the swans, geese, and other overwintering waterfowl almost daily while I work. They serve as a continual reminder that fall will be over soon with winter short on its heels. As the seasons change so do the projects I focus on for the Lifeways & Landscapes Program.

Now is the time where I am buttoning up the interpretation displays, focusing on research, and preparing the House for Tribal use over the winter. Winter, in many ways, is the most important season- when the renewal of Indigenous ceremony becomes the work of the House- during the annual public closure. I truly hope that those of you who visit the interior of the Cathlapotle Plankhouse so often throughout the spring and summer will continue to visit the exterior in the fall and winter. Before we all know it, spring will be here and the Plankhouse will open its door for visitors again.



- Juliet McGraw, Community & Cultural Education Director, Friends of RWNR
- Photo: Raul Moreno, 2nd Place, 2017 Refuge Photo Contest

Cathlapotle Plankhouse, 28908 NW Main Ave, Ridgefield, WA 98642

Note: Main Ave will remain closed at Depot St. On the way to the Carty Unit, please follow detour signs to use Reiman or N Royle Rd. Detour Map found [here](#).

- Photo Credit: Raul Moreno, 2nd Place 2017 Refuge Photo Contest



Preserve America is a national initiative in cooperation with the Advisory Council on Historic Preservation; the U.S. Departments of Defense, Interior, Agriculture, Commerce, Housing and Urban Development, Transportation, and Education; the National Endowment for the Humanities; the President's Committee on the Arts and Humanities; and the President's Council on Environmental Quality.

Habitat Restoration Updates & Events

Winter Restoration is for the birds



This November, restoration work included 30 Scouts and Webelos planting 200 camas bulbs in three and a half hours on the Carty Unit! These plantings are important not only for their cultural significance in our area, but camas patches provide grazing areas for deer, like the Columbian White-tailed Deer.

We are also making upward progress on our High Tunnel project, with the plan to cover and complete the building in February after the harsher winter months.

Wintertime is spent planting trees and plants for next year, to the sound of rain and the calls of geese and swans. It's chilly, but some of the best times to volunteer, and some of our favorite work.

Habitat Restoration Work Parties on the River 'S' & Carty Units:
9 am - 12:30 pm Wednesdays & Thursdays
Contact elena_tinoco@fws.gov for more info and to sign up.

This year, our #GivingTuesday efforts will mainly go to fund the remaining supplies needed to complete the restoration required within the Oak Release area of the Oaks-to-Wetlands Trail on the Carty Unit. You can help support this project on December 3rd! [Find out more here.](#)



General Habitat Questions? Contact [Keith Rutz](#) or [contact us](#) for more information.

Species Spotlight

Golden-crowned Kinglet

Regulus satrapa

Much like the Ruby-crowned Kinglets of last month's Species Spotlight, Golden-crowned Kinglets are tiny (barely larger than a hummingbird) birds with an overall olive and grey coloring, and a surprise on their crest. They have a black-and-white striped face, a thin white wingbar, and yellow edges to their black flight feathers. As their name suggests, Golden-crowned Kinglets have a bright golden crown of yellow-orange feathers that stays concealed... [Keep Reading...](#)



Photo: Douglas Beall, 2nd Place Birds Category, 2019 Photo Contest Winner

A flyer for Friends of Ridgefield National Wildlife Refuge. The top left section is titled "Supporting the Ridgefield NWR" and lists benefits of membership: 200,000+ visitors annually, 1,000+ students participating in field trips and educational programs, 4,000+ visitors to BirdFest & Bluegrass, 1,000 attendees at Plankhouse events, 1,200 assembly newsletter readers, 1,500 assembly events held, and 300 community volunteers who provide more than 10,000 hours of work. The middle section features a photograph of a wooden boardwalk leading through a wetland at sunset. The bottom right section includes the organization's name, address (P.O. Box 1022, Ridgefield, NH 03442), website (www.fridgenature.org), and a call to action: "Join our Business Alliance!".

Seeking Business Alliance Members

As a member of the Friends of the Ridgefield National Wildlife Refuge Business Alliance, you invest in one of our urban metropolitan area's most unique and diverse natural and cultural resources. [Click here to find out more!](#)

Board Seeking New Board Members

Or, Join a Committee

The Friends of the Ridgefield National Wildlife Refuge is a non-profit dedicated to promoting educational and cultural programs of the Ridgefield NWR, and protecting and enhancing its wildlife habitat. We are currently seeking candidates to serve on our board of directors. We are recruiting candidates with diverse backgrounds and skills for several open board positions, in addition to candidates interested in serving on a committee (board membership not required).



Find out more about the Friends, and [contact us, here](#).

Calling All Volunteers!

Volunteer Opportunities:

Refuge and Trail Greeters

Over 120,000 visitors flock to the Refuge annually to enjoy nature through participation in wildlife observation, photography, environmental education, cultural interpretation, hunting, and fishing. Volunteers help to make their experiences meaningful. Share your enthusiasm for nature and make the Refuge a welcoming place for people walking our trails, stopping at the Visitor Contact

Cathlapotle Plankhouse

The Cathlapotle Plankhouse draws thousands of visitors to the Refuge each year. Help share the legacy of the Indigenous people who have tended to this place since time immemorial as a Plankhouse Docent or Cultural Educator. Field trips take place during the weekdays. Docents staff the house on weekends from April - September.

Support the Friends

Help us inspire people to support the Refuge! Whether you help us out during BirdFest & Bluegrass in October by giving directions or helping set up, or by providing

Station and driving the AutoTour.
Volunteers naturalists needed to walk trails and teach people about what they can see and enjoy at the Refuge this summer!
If you are interested email
RidgefieldVolunteer@fws.gov to be put on the update list.

outreach for what the Friends do, or joining the board or a committee, every little bit helps.

Now you can sign up to volunteer easily on our website!

[Check it out by clicking here!](#)

[Learn more about volunteering at Ridgefield National Wildlife Refuge here](#)

Birding Enthusiasts

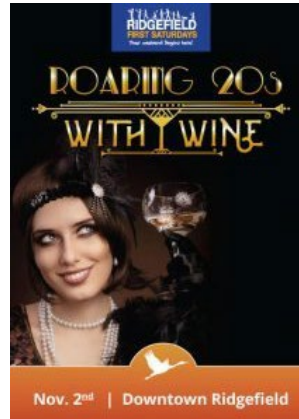


Check out what species are being seen on the Refuge [here](#).

[Donate](#)

Ridgefield First Saturday:

Hometown Celebration
December 7, 2019



Join your friends and neighbors for the 20th Anniversary of the Hometown Celebration! All day fun for the whole family and kids of all ages.

Find the Friends 2020 Calendars for sale at this event!

[Full Schedule Here](#)

Benefits of Membership



Discounts at local businesses for new and renewing members! Would you like to enjoy a cup of coffee from Ridgefield's Seasons after a morning hike on the Refuge? Lunch at Vinnie's Pizza in-between the River 'S' and Carty Units? Dinner and drinks at the Historic Sportsman's Restaurant and Lounge after a busy day of wildlife viewing (5% off a meal with member card!)? Or maybe you would like to get a discount on some supplies at Shorty's or Backyard Bird Shop? How about a night out at Ilani? Find out more, become a Friend, or renew your membership today and receive a member card with great discounts at these wonderful local businesses! Feel free to [contact us](#) for any questions or inquiries.

The Friends of the Ridgefield National Wildlife Refuge promote the enjoyment, understanding, and protection of native and endangered birds, other wildlife, and their habitats. We focus on our local community and the Pacific Northwest. Visit us on the web at www.ridgefieldfriends.org

Want regular updates on Refuge events and happenings? Follow the Friends on your favorite social media by clicking the logos below to stay connected even when you are off the Refuge.



Sponsors

Business Alliance Members:



In-kind Support:



BirdFest & Bluegrass:



Granting Organizations & Partners:



Header Photo Credit: Raul Moreno, 2nd Place 2017 Refuge Photo Contest

Would you like to forward this email to a friend? [Click here.](#)

Share This Email:    

[Remove my name from all future mass email communications.](#)

Address postal inquiries to:

Friends of Ridgefield National Wildlife Refuge
PO BOX 1022
Ridgefield, WA 98642