

[View as Webpage](#)

Please add contact@ridgefieldfriends.org to your address book or safe senders list.

You are receiving this email because you are either a member or signed up for our mailing list.



The Friends of Ridgefield National Wildlife Refuge

The latest updates | November, 2022

2022/2023 Merch Updates

Photo Contest Calendar, BirdFest & Bluegrass button image, and more!

FRIENDS OF RIDGEFIELD NATIONAL WILDLIFE REFUGE

2023 REFUGE PHOTO CONTEST CALENDAR

View the 2022 Ridgefield National Wildlife Refuge Photo Contest Winners in this stunning collection

\$18

Buy online at www.RidgefieldFriends.org

8.5x11 size, with bonus contest photos
Highlights important Refuge dates and more!

XL & Jumbo sizes available
Plus, check out our other items, with more being added all the time!

Check out the 2022 Ridgefield National Wildlife Refuge Photo Contest-winning images in this spectacular collection. This 2023 calendar not only features the winning images along with their photographer's name and place, but also includes fun facts about the subjects of each photo, important Refuge-related holidays, and more. Support wildlife, nature, and education with one purchase that keeps on giving.

Available in 8.5x11, XL 11x14, and Jumbo 12x12 sizes as well as PDF download.

Get yours now!

More 2022 photo contest items updated daily!

Get your friends and family (or yourself!) a gift that will remind them of nature's beauty and support a wonderful cause!

If there isn't something you like, you can always donate, or buy a membership to the Friends in someone's name - an annual gift program that supports wildlife, habitat, volunteers, education, and more. **START SHOPPING!**



Ridgefield Refuge Complex News & Events

Gate times for both units: 7:30 am - 6:30 pm

Seasonal Trails close Sept 30th & re-open May 1st

Reminder: daylight is quickly shortening, pay attention to gate times when you visit

Naturalist-led Walks

Volunteers make it possible to offer public naturalist-led walks about a variety of topics. The following opportunities are listed by walk leader and topic.

- For questions and to sign up for Ridgefield NWR, email RidgefieldVolunteer@fws.gov.
- For questions and to sign up for Steigerwald Lake NWR, head to the [Columbia Gorge Refuge Stewards website](#) and choose a date to register.

(Please keep in mind that these hikes are limited, and only sign up for one or two at a time.)

Dates at Ridgefield:

Birding with Ron Escano

- Saturday November 19th
- Saturday December 17th

Birding with Robert Vanderkamp

- Saturday November 12th
- Saturday December 10th

Learn more about the walk leaders, locations, and more- head to [our website, here](#).

UPCOMING BIRD WALKS

Explore the Refuge with Us and Get Outdoors

The following guided walks are led by USEFWS Volunteers. They start at 8:00 am at the respective trail head and last two to three hours.

To register, visit us online.

Ridgefield NWR	Steigerwald Lake NWR
- Oct. 8	- Oct. 1
- Oct. 12	- Oct. 15
- Oct. 29	- Oct. 29
- Nov. 12	- Nov. 12
- Nov. 19	- Nov. 26
- Dec. 10	- Dec. 10
- Dec. 17	

The Carty Unit Oaks-to-Wetlands Trail, within the Oak Restoration area, is generally closed Thursdays for trail maintenance, watch for signs.

NOTE: The Washington State Discover Pass is not valid on Federally managed public lands, including National Wildlife Refuges. Find out more about [fees & passes here](#).

Check the Refuge2020.info website for project updates on all our Refuges in the Ridgefield Complex.

From the Contact Station

Anticipating Seasonal Arrivals

We spent much of August watching the water disappear from the Refuge along with many of the visitors. Just a few muddy puddles remained. When they could be viewed, they had some nice surprises with not often seen

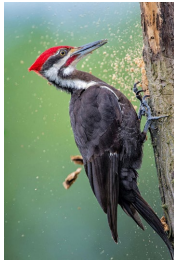


shorebirds and bitterns in full view. Frogs were hopping everywhere as herons were smiling at the easy meal offerings. In mid-September visitors began to reappear, asking “Are the ducks here yet? Where are the geese? Have you seen any cranes?” Sometime in September, after all the delayed treating and discing of the wetlands for invasives was complete, FWS started pumping water into the River S from the Columbia River/Bachelor Slough...[keep reading...](#)

-Susan Setterberg, Contact Station Volunteer

image: Sandhill Cranes on Ridgefield Refuge. Photo by Susan Setterberg

Birding Enthusiasts



Check out what species are being seen on the Refuge [here](#).

Ridgefield First Saturdays Multicultural Festival November 5, 2022

The Make A Difference Month Challenge returns for a third year! Complete weekly challenges that benefit our community throughout the month of November and track your progress.

[Schedule, details, and more...](#)



Habitat Restoration Climate and Emerald Ash Borer

Summer of 2022 was a dry, drawn-out affair full of challenges and some bad news. Challenges are expected in habitat work. Climate change is happening, weather patterns are responding, and temperature and precipitation data reflect the change in climate. We may not have all, or any, solutions to a changing climate, but it is something we have had decades to prepare and mitigate for.

The detection of an emerald ash borer infestation eleven miles south of the refuge is bad news for riparian habitats in the region. The importance of ash trees in lower-elevation riparian forests can not be overstated. Although we could save individual ash trees through prophylactic poisoning, we cannot save the riparian ash forest as an intact functioning system, and we are expecting over a 90% loss of ash trees in the northwest based on ash borer impacts to eastern forests.



Learn more and report sightings: <https://invasivespecies.wa.gov/prioritiespecies/emerald-ash-borer/>

-Keith Rutz, Habitat Restoration Coordinator

image from the Washington Department of Natural Resources

Species Spotlight

Western Painted Turtles



The painted turtle is brightly marked with a smooth shell. It has a relatively flat upper shell with red and yellow markings on a black or greenish-brown background. Males mature at 3 to 5 years when their lower shell is about 2.8 to 3.7 inches long. Females take longer to mature, up to 10 years, and get larger, up to 5 inches for their lower shell. Turtles continue to grow slowly after maturity, and their upper shell can reach almost 10 inches when living for many decades.

The most widespread North American turtle, the painted turtle is the only turtle....[keep reading...](#)

-Susan Setterberg, Contact Station Volunteer
images sketched by Susan Setterberg

Become a Business Alliance Member!

As a member of the Friends of the Ridgefield National Wildlife Refuge Business Alliance, you invest in one of our urban metropolitan area's most unique and diverse natural and cultural resources. [Click here to find out more](#)

A flyer for the Friends of Ridgefield National Wildlife Refuge Business Alliance. The flyer features a background image of a wooden boardwalk leading through a wetland at sunset. Text on the flyer includes: "Supporting the Ridgefield NWR", "As a member of the Friends of the Ridgefield National Wildlife Refuge Business Alliance, you invest in one of our urban metropolitan area's most unique and diverse natural and cultural resources.", "Your annual Business Alliance Membership comes with:", a list of benefits (300,000+ visitors annually, 5,000 students in field trips, 4,000 visitors to Birdfest & Bluegrass, 1,000 attendees at Parkhouse events, 1,200 monthly newsletter readers, 1,100 monthly website visits, and 250 community volunteers), "The Banning on Nature study released in 2015 reports that an average of \$4.62 is returned to local communities for every dollar Congress provides in funding to run the National Wildlife Refuge System.", "Your partnership with the Friends helps ensure the future and success of this breathtaking natural resource. Invest in your community by becoming a part of our Business Alliance today!", "Photograph Credit: Douglas Seal, Eagle Vista, Co. Inc./iStock, iStock Photos", "Friends of Ridgefield National Wildlife Refuge, P.O. Box 1012, Ridgefield, WA 98642, www.ridgefieldnwr.org", and "Join our Business Alliance!".



Board Seeking New Members Or, Join a Committee

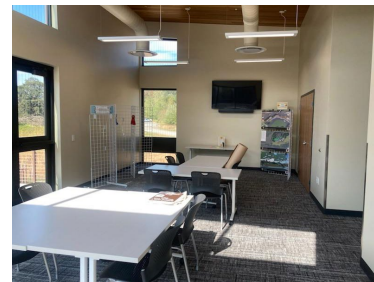
The Friends of the Ridgefield National Wildlife Refuge is a non-profit dedicated to promoting, protecting, and enhancing its wildlife habitat. We are currently seeking candidates to serve on our board of directors. We are recruiting candidates with diverse backgrounds and skills for several open board positions, in addition to candidates interested in serving on a committee (board membership not required).

Find out more, and [contact us here](#)

Friends Board Meetings

Join the Friends of Ridgefield National Wildlife Refuge Board for their monthly meeting. Meetings start at 5 PM every second Monday of the month and will be in-person at the Ridgefield NWR Administration Building (28908 NW Main AVE), [contact us](#) to join in!

2022: November 14 (2 hour closed workshop), December 12



Support While You Shop

When you link your Fred Meyer Rewards Card to the Friends, you help us earn donations from Fred Meyer Community Rewards. It doesn't change your regular personal shopping and fuel rewards, but it does make a meaningful contribution to our work on the Refuge. It's easy to sign up. [Just click here.](#) You can search for us by our name, Friends of Ridgefield NWR, or by our non-profit number,



PK822. Then, every time you shop and use your Rewards Card, you are helping earn a donation to support the Friends and Ridgefield NWR. If you do not have a Rewards Card, ask at the Customer Service desk of any FM store.



Log on to smile.amazon.com and shop as you usually would - .5% of your purchase will be donated directly to the Friends! Use the link with your existing user name and password. When prompted to select a charity, choose the Friends of Ridgefield Wildlife Refuge.

Would you like to enjoy a cup of coffee from Ridgefield's Seasons Coffee after a morning hike on the Refuge? Lunch in-between the River 'S' and Carty Units? Dinner and drinks at the Historic Sportsman's Restaurant and Lounge after a busy day of wildlife viewing (5% off a meal with member card!)? Or maybe you would like to get a discount on some supplies at Shovel & Thumb or Backyard Bird Shop? How about a night out at ilani?

Find out more, become a Friend, or renew your membership today and receive a member card with great discounts at these wonderful local businesses! Feel free to contact us for any questions or inquiries.

Benefits of Membership



The Friends of the Ridgefield National Wildlife Refuge promote the enjoyment, understanding, and protection of native and endangered birds, other wildlife, and their habitats. We focus on our local community and the Pacific Northwest.

Sponsors

Business Alliance Members:



In-Kind Support:



BirdFest & Bluegrass:



Granting Organizations & Partners:



Header Photo Credit: Gary Grossman, 2018, 1st place Landscape Category, Refuge Photo Contest

**FRIENDS OF RIDGEFIELD
NATIONAL WILDLIFE REFUGE** 

[Contact Us](#) | [Website](#)

Want regular updates on Refuge events and happenings? Follow the Friends on your favorite social media by clicking the logos below to stay connected even when you are off the Refuge.

