

[View as Webpage](#)

Please add [contact@ridgefieldfriends.org](mailto:contact@ridgefieldfriends.org) to your address book or safe senders list.  
You are receiving this email because you are either a member or signed up for our mailing list.



# The Friends of Ridgefield National Wildlife Refuge

The latest updates | December, 2022

**Thank you 2022 Members & Donors (so far)!**

## **MEMBERS AND DONORS**

### **DEC 2021**

Cassandra Hughes

John & Joanna Willey

### **2022 (AS OF 11/28/22)**

Libby Adock & Jack Bernhardsen

Mickey Anderson

Jeanne & Jack Androvich

Anonymous

Marilyn Arnesen

Bill & Kathy Baumann

Robin & Lyle Bradford

Barry Brenner

Anne Bulger

James Calderon

Rick Casebolt

Marion Cassidy

James Clapp

Katie Clark

Gwen Corum

Sarah Cowgill

Dennis & Pat Cox

Patrick Culhane

Lisa Davis

Margaret Dent

Rick Detroye

Joy Diamond

Kaye Duncan

Lynn & Tanna Engdahl

Nancy Fagan

Tom Finn

Freya Fisher

Michelle Gardes

Jim & Judy Gilles

Pat Gorman

Charles Green

Mary Grout

Christina Gullon

Brigid Hackett

Peggy Haugen

Bob Herchick

Joann Hrabousky

Cynthia Hutchison

Eric Johansen

Dennis Johnson

Kelly Karim

Thea Kuticka

Michael & Martha Kutter

Clan Lambert

Hillary Lambert

April Landman- Raindrop Giftshop

Patricia Larson

Beth Marlin Lichter

Leslie Lopez

Donna Mackenzie

William Maiden

Judl Marcin

Twila & Mark McCombs

Gwendolyn & Rose Morgan

Gary & Robert A. Moriarty, in memory of Mike Matanich

Linda Murtfeldt

Jim & Pam Osborne

Joe & Susie Palena

Margie Palmrose

Janet Phillips

Jacob Reams

Johanna Reimenschneider, in memory of Mike Matanich

Kay Richardson

Russ & Claudia Roseberry

Cory Samla

Pam Saunders

Terri Schulte

Virginia Scott, in honor of Ridgefield Staff

Susan Setterberg

Kelly Smith

Craig & Deanne Smith, in Memory of Barney Adler

William Smythe

Jill Spencer

Gerald Taborsky

Julie Tanner

Terri Taylor

Wendy Temko

Nick Thistle

Tidewater

Andrew Tran

Ken & Joan Turnbull

Robert Vanderkamp

Lee Waters

Violet Watson

Suzanne Whitney

Lori Wick

Susan Wickersham

Anna Wilde

Mark & Peggy Wood

Karen Wood

### **#GIVEMORE24 - SEPT. 22, 2022**

Eugene Beireis

Bianca Bianco

Robin & Lyle Bradford

Terry & Jori Brown

Anne Bulger, in honor of Stefan Nabilec

Kendra Cameron

Mark Danburg-Wyld & Jennifer Wyld

Valerie Diehl

Alex Earl

Lynn & Tanna Engdahl, in memory of Cowlitz Ancestors

Jeff Fagan

Freya Fisher

Nancy Friedland

Judy & Jim Gilles

Erinne Goodell

Chuck Green

Jana Grote

Brigid Hackett, in memory of Diane Wagner

Martha Hancock

Scott Hewitt

Carey Holubar

Jesus Loves Birds

Fred & Merrily Kerr

Barb & Rennie Kubik

Renee Kuvelas

Patricia Larson

Don & Nonie Laurine

Beth Marlin Lichter

Judith Lundeen

Katherine Lytle

Donna MacKenzie

Sue Marshall

Marilyn Martinyak

Mashek Family

Jim & Kelly Maul

Ian McIlvena

Curt & Debby Mohler

Kelsey Morales

Lynn B Neyra

Kim Netch

Jeanne & Jim Nindel-Edwards

Kirk Paulsen

James Potter

Mary Regan

Kay Richardson

Lynne Riesenber, in honor of Natalie Weber

Carolyn J. Rose

Don Rose

Russ & Claudia Roseberry

Chris Sanborn

Walter & Maureen A. Schuette, in honor of Evan, Barrett, Jolynn, Justin, Carter & Jay

Victoria Silao

Christie Swanson

Julie Tanner

Natalie Weber

Evelyn Weed

Alex & Malena Whitehouse, in memory of Rebecca Bjorklund

Suzanne Whitney

Den Mark Wichar

Anna Wilde

Marvin Yoshinaka

Jackson Zeiner

Tom & Lisa Zeiner, in memory of Marjorie June Zeiner

Steven Zuffoletti

Want to be on this list? [Buy a membership to the Friends, HERE!](#)

## **2022/2023 Merch Updates**

Photo Contest Calendar, ***NEW Puzzles!***, BirdFest & Bluegrass button image, and more!

Check out the 2022 Ridgefield National Wildlife Refuge

FRIENDS OF RIDGEFIELD NATIONAL WILDLIFE REFUGE

# 2023 REFUGE PHOTO CONTEST CALENDAR

View the 2022 Ridgefield National Wildlife Refuge Photo Contest Winners in this stunning collection

**\$18**

Buy online at [www.RidgefieldFriends.org](http://www.RidgefieldFriends.org)

8.5x11 size, with bonus contest photos  
Highlights important Refuge dates and more!

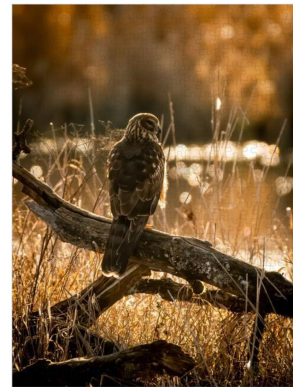
**XL & Jumbo sizes available**  
Plus, check out our other items, with more being added all the time!

Photo Contest-winning images in this spectacular collection. This 2023 calendar not only features the winning images along with their photographer's name and place, but also includes fun facts about the subjects of each photo, important Refuge-related holidays, and more. Support wildlife, nature, and education with one purchase that keeps on giving.

Available in 8.5x11, XL 11x14, and Jumbo 12x12 sizes as well as PDF download.

**Get yours now!**

Who here loves a good jigsaw puzzle on a dark winter evening? Or maybe you know someone who does? Then we have the perfect gift for you! The Friends are offering, for the first time ever, Refuge Photo Contest puzzles! We picked just a few images for these 500-piece puzzles, available online only, as another way that people can purchase and enjoy these amazing images. **SHOP FOR PUZZLES HERE** (not the same link as the calendar)



We also have mugs, tote bags, photo cards, t-shirts and sweatshirts with previous photo contest winners, BirdFest logos and art, and the Chinookan Steller's Jay design by Greg A. Robinson. Get your friends and family (or yourself!) a gift that will remind them of nature's beauty and support a wonderful cause!

If there isn't something you like, you can always **donate**, or **buy a membership to the Friends**, for yourself or in someone's name - an annual gift program that supports wildlife, habitat, volunteers, education, and more.

**Start Shopping! (does not include puzzle link)**

## Annual Member & Volunteer Appreciation Meeting

Save the Date for the Friends of Ridgefield National Wildlife Refuge Member & Volunteer Appreciation Meeting, **Saturday, January 28, 2023!** More details coming soon, stay tuned.



3:00 PM  
Old Liberty Theater  
115 N Main Ave  
Ridgefield, WA 98642  
Not a member yet? [Get started here!](#)



**Ridgefield Refuge Complex News & Events**  
Gate times for both units: 7:30 am - 4:30 pm  
Seasonal Trails close Sept 30th & re-open May 1st

\*Reminder: daylight is quickly changing, pay attention to gate times when you visit\*



### Annual Veteran's Hunt 2023

Working with community partners to help heal in the outdoors

The work of Friends groups goes deeper than one might see or understand at first glance. Many of us witness the heroic work of these volunteer-run organizations engaging communities in conservation and wildlife-dependent recreation. To ensure this happens in meaningful ways we must be dedicated to building relationships to understand the diverse ways people connect to nature and the barriers they face.

Partnering with the Service, the Friends of Ridgefield NWR help to provide a safe, quality, and conservation-focused waterfowl hunt program, all season long. Those who connect and contribute to conservation through the restoration and harvest of wild game are finding programs like this few and far between. Participation in a hunting program, especially as a new learner, can be challenging for many.

Last month, the Friends and the Service supported the [Washington Waterfowl Association Lower Columbia Chapter](#) and [The Fallen Outdoors](#) to connect US Military Veterans to caring and expert hunting mentors, for a fun and healing outdoor experience. This small, low-pressure event takes many hours and a lot of coordination to ensure that all involved feel welcome and supported, including all the gear needed to be comfortable while learning new skills.

The Annual Veteran's Hunt is one of these examples of your local Friends group participating in the creation of impactful outdoor experiences with, and for, the community.

-Josie Finley, Visitor Services Manager

image by USFWS Juliette Fernandez - Sunrise over duck decoys floating on the water

(questions about the Hunt Program can be answered at [The Ridgefield National Wildlife Refuge Administration Office](#), open Monday-Friday 8 am-4 pm. General inquiries M-F, 8 to 4:30 can be answered at 360-887-4106.)

## Naturalist-led Walks

Volunteers make it possible to offer public naturalist-led walks about a variety of topics. The following opportunities are listed by walk leader and topic.

- For questions and to sign up for Ridgefield NWR, email [RidgefieldVolunteer@fws.gov](mailto:RidgefieldVolunteer@fws.gov).
- For questions and to sign up for Steigerwald Lake NWR, head to the [Columbia Gorge Refuge Stewards website](#) and choose a date to register.



The poster features a green background with a calendar icon and a mallard duck. It lists upcoming bird walks for Ridgefield NWR and Steigerwald Lake NWR. The text includes: 'UPCOMING BIRD WALKS', 'Explore the Refuge with Us and Get Outdoors', 'The following guided walks are led by USFWS Volunteers. They start at 8:00 am at the respective trail head and last two to three hours.', 'To register, visit us online.', and a list of dates for both locations.

Ridgefield NWR	Steigerwald Lake NWR
- Oct. 8	- Oct. 1
- Oct. 12	- Oct. 15
- Oct. 29	- Oct. 29
- Nov. 12	- Nov. 26
- Nov. 19	- Nov. 26
- Dec. 10	- Dec. 10
- Dec. 17	

### Dates at Ridgefield:

Birding with Ron Escano

- Saturday December 17th

Birding with Robert Vanderkamp

- Saturday December 10th

Learn more about the walk leaders, locations, and more- head to [our website, here](#).

The Carty Unit Oaks-to-Wetlands Trail, within the Oak Restoration area, is generally closed Thursdays for trail maintenance, watch for signs.

[Ridgefield National Wildlife Refuge Administration Office](#) is open Monday-Friday 8 am-4 pm. General inquiries M-F, 8 to 4:30 can be answered at 360-887-4106.

*NOTE: The Washington State Discover Pass is not valid on Federally managed public lands, including National Wildlife Refuges. Find out more about [fees & passes here](#).*

Check the [Refuge2020.info](#) website for project updates on all our Refuges in the Ridgefield Complex.

## From the Contact Station

### Interesting Observations & Meet the New Volunteers



Woodruff

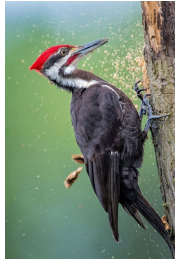
Eagle Behavior: Sometimes you are just in the right place at the right time. While doing a November goose count, Barry Woodruff and I had a great experience watching Bald Eagles. We were counting geese in the field west of #14 when I spotted an adult Bald Eagle cruising low toward us from Long Lake. Hot on its tail was a juvenile eagle. The adult...[keep reading...](#)

-Susan Setterberg, Contact Station Volunteer  
image: *Adult and juvenile Bald Eagles with prey by Barry*

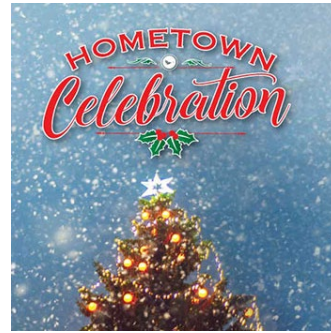
## Birding Enthusiasts

## Ridgefield First Saturdays

Hometown Celebration  
December 3, 2022



Check out what species are being seen on the Refuge [here](#).



Celebrate the Holiday season in the Ridgefield tradition with Hometown Celebration!

The Friends of Ridgefield National Wildlife Refuge are joining other businesses and organizations in the 2022 Circle of Trees Tree Decorating Contest! Come by and vote for the Friends!

[Schedule, details, and more...](#)

## Become a Business Alliance Member!

As a member of the Friends of the Ridgefield National Wildlife Refuge Business Alliance, you invest in one of our urban metropolitan area's most unique and diverse natural and cultural resources. [Click here to find out more](#)



## Board Seeking New Members Or, Join a Committee

The Friends of the Ridgefield National Wildlife Refuge is a non-profit dedicated to promoting, protecting, and enhancing its wildlife habitat. We are currently seeking candidates to serve on our board of directors. We are recruiting candidates with diverse backgrounds and skills for several open board positions, in addition to candidates interested in serving on a committee (board membership not required).

Find out more, and [contact us here](#)

**Supporting the Ridgefield NWR**  
As a member of the Friends of the Ridgefield National Wildlife Refuge Business Alliance, you invest in one of our urban metropolitan area's most unique and diverse natural and cultural resources.

Your annual Business Alliance Membership connects you with:

- 200,000+ visitors annually;
- 5,000 students participating in field trips and educational programs;
- 4,000 visitors to Birdfest & Swanings;
- 1,000 attendees at ParkHouse events;
- 1,200 monthly newsletter readers;
- 1,100 monthly website visits;
- and 250 community volunteers who provide more than 10,000 hours of work.

The Banking on Nature study released in 2013 reports that an average of \$4.87 is returned to local communities for every dollar Congress provides in funding to run the National Wildlife Refuge System.

Your partnership with the Friends helps ensure the future and success of this breathtaking natural resource. Invest in your community by becoming a part of our Business Alliance today!

Photograph Credit: Douglas Reed, www.fredmeyer.com/Reds, Bill Haines.

**Friends of Ridgefield National Wildlife Refuge**  
P.O. Box 1032  
Ridgefield, WA 98642  
[www.ridgefieldnwrefuge.org](http://www.ridgefieldnwrefuge.org)

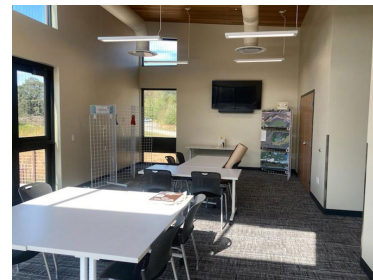
**Join our Business Alliance!**

2018 Supplier Third-Party Contract, Protected Charitable Firm and PFC certified.

## Friends Board Meetings

Join the Friends of Ridgefield National Wildlife Refuge Board for their monthly meeting. Meetings start at 5 PM every second Monday of the month and will either be in-person at the Ridgefield NWR Administration Building (28908 NW Main AVE), or virtual- the plan is to switch off each week. [Contact us](#) to join in!

2022: December 12 (virtual)



## Support While You Shop

When you link your Fred Meyer Rewards Card to the Friends, you help us earn donations from Fred Meyer Community Rewards. It doesn't change your regular



personal shopping and fuel rewards, but it does make a meaningful contribution to our work on the Refuge. It's easy to sign up. [Just click here.](#) You can search for us by our name, Friends of Ridgefield NWR, or by our non-profit number, PK822. Then, every time you shop and use your Rewards Card, you are helping earn a donation to support the Friends and Ridgefield NWR. If you do not have a Rewards Card, ask at the Customer Service desk of any FM store.



Log on to smile.amazon.com and shop as you usually would - .5% of your purchase will be donated directly to the Friends! Use the link with your existing user name and password. When prompted to select a charity, choose the Friends of Ridgefield Wildlife Refuge.

Would you like to enjoy a cup of coffee from Ridgefield's Seasons Coffee after a morning hike on the Refuge? Lunch in-between the River 'S' and Carty Units? Dinner and drinks at the Historic Sportsman's Restaurant and Lounge after a busy day of wildlife viewing (5% off a meal with member card!)? Or maybe you would like to get a discount on some supplies at Shovel & Thumb or Backyard Bird Shop? How about a night out at ilani?

[Find out more, become a Friend, or renew your membership](#) today and receive a member card with great discounts at these wonderful local businesses! Feel free to [contact us](#) for any questions or inquiries.

## Benefits of Membership



The Friends of the Ridgefield National Wildlife Refuge promote the enjoyment, understanding, and protection of native and endangered birds, other wildlife, and their habitats. We focus on our local community and the Pacific Northwest.

## Sponsors

Business Alliance Members:



In-Kind Support:



BirdFest & Bluegrass:



Granting Organizations & Partners:



Header Photo Credit: Raul Moreno, 2017, 1st place Adult category, Refuge Photo Contest

**FRIENDS OF RIDGEFIELD  
NATIONAL WILDLIFE REFUGE** 

[Contact Us](#) | [Website](#)

Want regular updates on Refuge events and happenings? Follow the Friends on your favorite social media by clicking the logos below to stay connected even when you are off the Refuge.

