

[View as Webpage](#)

Please add [contact@ridgefieldfriends.org](mailto:contact@ridgefieldfriends.org) to your address book or safe senders list.  
You are receiving this email because you are either a member or signed up for our mailing list.



## The Friends of Ridgefield National Wildlife Refuge

The latest updates | November 2023

### Limited-time BirdFest & Bluegrass Hoodie

#### **Purchase through November 6!**

Support BirdFest & Bluegrass, celebrate conservation, and commemorate your attendance at the event, Saturday, October 7, 2023!

This environmentally conscious hoodie uses recycled materials to create a midweight blended fabric. With a wide range of sizes, it's the perfect match for anyone's style.

Get them before they're officially gone!



[Order HERE](#)

### 2024 Refuge Photo Contest Calendars!

Start your holiday shopping early!



A gift for your loved ones, or a gift for you: view the 2023 Pro Photo Supply Ridgefield National Wildlife Refuge Photo Contest Winners in this captivating collection!

Find fun facts, important Ridgefield Refuge Complex events, moon phases, awareness months, and more!

**8.5x11, XL, & Jumbo wall calendar sizes available**

Plus, check out our other items, with more being

added all the time!

[Start Shopping](#)



### Ridgefield Complex News & Events

**Gate times for both units of Ridgefield National Wildlife Refuge; 7:30 am - 6:30 pm\***

\*Please note that Daylight Savings ending on November 5 will cause another gate time change.

#### Fall Birding Hikes

Walks start at 8:00 am at the Carty Unit of the Refuge and are limited to 15 people. While walks generally last two to three hours, you are welcome to stay or level according to your needs. Walks are free but the \$3 refuge daily fee does apply. For more information about the fee and rules of the refuge [click here](#).



For questions and to sign up for the following

opportunities, email [RidgefieldVolunteer@fws.gov](mailto:RidgefieldVolunteer@fws.gov) with the following information:

1. Name, date, and site of the walk.
2. Names of all participants.
3. Phone number.

For groups looking for guided tours see the [Education Page](#)

Questions that are not answered here or just can't get something to work? Call the office at 360-887-4106.

#### Birding with Ron Escano:

- Saturday, November 4, 8:00 am
- Saturday, December 2, 8:00 am

#### Birding with Robert Vanderkamp:

- Saturday, November 11, 8:00 am
- Saturday, December 9, 8:00 am
- Saturday, January 13, 8:00 am

The Carty Unit Oaks-to-Wetlands Trail, within the Oak Restoration area, may close occasionally for trail maintenance, watch for signs.

Ridgefield National Wildlife Refuge Administration Office is open M-F 8:00 am-4:00 pm.

General inquiries M-F, 8:00 am to 4:30 pm can be answered at 360-887-4106.

*NOTE: The Washington State Discover Pass is not valid on Federally managed public lands, including National Wildlife Refuges. Find out more about [fees & passes here](#).*

## From the Contact Station Fall Spectacles and Foggy Weather



*The Cranes are here:* Crane numbers peak in mid-October as the migration brings in our overwintering crowd and those that stop for a bite to eat as they fly farther south into Oregon and California. We did our count on October 16 this year. We drove in to our count assignments about 4pm behind a tornado warning passing through Vancouver to Battle Ground. We kept our eyes on the skies for more than cranes that evening. The count area covers Sauvie Island to the west and Vancouver Lake, all the Refuge and Plas Newydd Farm north of the refuge to the Lewis River on the east side of the Columbia River. We are stationed at known roosting areas. As the sun goes down, we count all the cranes coming to roost. I was counting on the River S near #11...[Keep reading...](#)

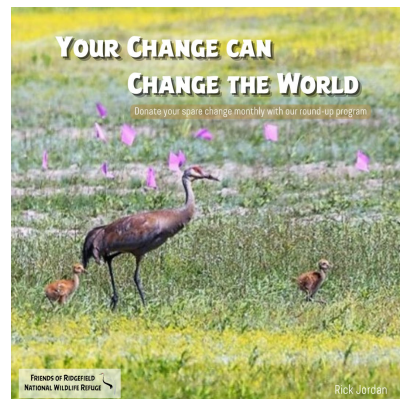
**-Susan Setterberg, Contact Station Volunteer**

"Break up of storm clouds as we await the arrival of cranes" by Susan Setterberg

## New Refuge Round-Up Giving Program!

We've made it even easier for you to support our mission by automatically donating your spare change from everyday purchases. You can set and control the amount you wish to donate each month, and every time you make a purchase, the Round-Up Giving program will automatically "round-up" the purchase amount to the nearest dollar.

Your generosity will help support wildlife, and invest in our community's access to nature with the future Community Nature Center!



***It's simple to set up automatic Round-Ups according to your preferences:***

1. Head to [RidgefieldFriends.org](http://RidgefieldFriends.org), then click the green "Donate" button on bottom-

left of any page.

2. Activate any card you use for your daily purchases.
3. Set your monthly giving limit. You can change your limit at any time.
4. Every purchase you make with your designated card will be automatically rounded up, and the proceeds donated directly to the Friends of Ridgefield National Wildlife Refuge in support of the Refuge's programs.

It's that easy!

Donate Your Spare Change

**Questions? Check out the FAQ, here.**

image by Rick Jordan

## Birding Enthusiasts



Check out what species are being seen on the Refuge [here](#).

## Ridgefield First Saturdays Make a Difference Month All November

Each week participate in one of the four of 2023's Make a Difference Month Challenge and Activities.

Week 1: Stewardship, Week 2: Small Acts of Kindness, Week 3: Gratitude, and Week 4: Community.



[See the Full Schedule and details here](#)

## Become a Business Alliance Member!

As a member of the Friends of the Ridgefield National Wildlife Refuge Business Alliance, you invest in one of our urban metropolitan area's most unique and diverse natural and cultural resources. [Click here to find out more](#)

**Supporting the Ridgefield NWR**  
As a member of the Friends of the Ridgefield National Wildlife Refuge Business Alliance, you invest in one of our urban metropolitan area's most unique and diverse natural and cultural resources.

Your annual Business Alliance Membership commits you with:

- 250,000+ visitors annually;
- 5,000 students participating in field trips and educational programs;
- 4,000 visitors to BirdFest & Bluegrass;
- 5,000 attendees at Planthouse events;
- 1,200 monthly newsletter readers;
- 1,500 monthly weekly calls;
- and 250 community volunteers who provide more than 10,000 hours of work.

The Banking on Nature study released in 2013 reports that an average of \$4.87 is returned to local communities for every dollar Congress provides in funding to run the National Wildlife Refuge System.

Your partnership with the Friends helps ensure the future and success of the breathtaking natural resources loved in your community by becoming a part of our Business Alliance today!

Photograph Credit: Douglas Paul, Angela Vogel, Oca Norton, Sam Menden.

Friends of Ridgefield National Wildlife Refuge  
P.O. Box 9522  
Ridgefield, WA 98642  
www.ridgefieldnwr.org

Join our Business Alliance!

100% Recycled Post-Consumer-Waste, Printed Chlorine Free and FSC Certified.



## Board Seeking New Members Or, Join a Committee

The Friends of the Ridgefield National Wildlife Refuge is a non-profit dedicated to promoting, protecting, and enhancing its wildlife habitat. We are currently seeking candidates to serve on our board of directors. We are recruiting candidates with diverse backgrounds and skills for several open board positions, in addition to

candidates interested in serving on a committee (board membership not required).

Find out more, and [contact us here](#)

## Friends Board Meetings

Join the Friends of Ridgefield National Wildlife Refuge Board for their monthly meeting. Meetings start at **5:00 PM** every second Monday of the month and will either be virtual through the winter. [Contact us](#) to join in!

### Board Meeting Dates:

November 13, 2023

December 11, 2023

January 8, 2024

February 12, 2024



## 2022/2023 Merch Updates

**NEW Puzzles!**, merch featuring contest winners, BirdFest & Bluegrass button images, Chinookan Steller's Jay art by Greg Robinson, and more!

Who loves a good jigsaw puzzle on a dark winter evening? Or maybe you know someone who does? Then we have the perfect gift for you!

We also have mugs, tote bags, photo cards, t-shirts and sweatshirts with previous photo contest winners, BirdFest logos and art, and the Chinookan Steller's Jay design by Greg A. Robinson. Get your friends and family (or yourself!) a gift that will remind them of nature's beauty and support a wonderful cause!



[SHOP FOR PUZZLES!](#)

[Shop Here! \(everything but puzzle link\)](#)

## Support While You Shop



When you link your Fred Meyer Rewards Card to the Friends, you help us earn donations from Fred Meyer Community Rewards. It doesn't change your regular personal shopping and fuel rewards, but it does make a meaningful contribution to our work on the Refuge. It's easy to sign up. [Just click here.](#) You can search for us by our name, Friends of Ridgefield NWR, or by our non-profit number, PK822. Then, every time you shop and use your Rewards Card, you are helping earn a donation to support the Friends and Ridgefield

NWR. If you do not have a Rewards Card, ask at the Customer Service desk of any FM store.

Would you like to enjoy a cup of coffee from Ridgefield's Seasons Coffee after a morning hike on the Refuge? Lunch in-between the River 'S' and Carty Units? Dinner and drinks at the Historic Sportsman's Restaurant and Lounge after a busy day of wildlife viewing (5% off a meal with member card!)? Or maybe you would like to get a discount on some supplies at Shovel & Thumb or Backyard Bird Shop? How about a night out at ilani?

Find out more, become a Friend, or renew your membership today and receive a member card with great discounts at these wonderful local businesses! Feel free to contact us for any questions or inquiries.

## Benefits of Membership



The Friends of the Ridgefield National Wildlife Refuge promote the enjoyment, understanding, and protection of native and endangered birds, other wildlife, and their habitats. We focus on our local community and the Pacific Northwest.

## Sponsors

Business Alliance Members:

In-Kind Support:



BirdFest & Bluegrass:



Granting Organizations & Partners:



Header Photo: Gary Grossman, 2018, 1st place Landscape Category, Refuge Photo Contest

FRIENDS OF RIDGEFIELD  
NATIONAL WILDLIFE REFUGE 

[Contact Us](#) | [Website](#)

Want regular updates on Refuge events & happenings? Follow the Friends on social media by clicking the logos below to stay connected even when you are off the Refuge.

