

[View as Webpage](#)

Please add contact@ridgefieldfriends.org to your address book or safe senders list.
You are receiving this email because you are either a member or signed up for our mailing list.



image credit: Raul Moreno, 2017, 2nd place Landscape Category, Refuge Photo Contest

The Friends of Ridgefield National Wildlife Refuge

The latest updates | February 2024

Refuge Open Hours: 7:30 am - 5:00 pm*

**Note- Open hours change rapidly this time of year, make sure to check [the USFWS website](#) before heading out.*

Daily Entrance Fee (good for the day at either unit):

- \$3.00 daily per vehicle, or up to four adults on foot.
- \$15.00 for an Annual Ridgefield NWR pass.

Payment by cash or check only. You can find payment envelopes at the kiosk in each unit. Or, become a member with the Friends at the \$60 level and above, and opt-in for an Annual Refuge Pass to be mailed to you.

Federal lands passes must be registered at an entrance kiosk.

Note - State Discover passes are not valid at National Wildlife Refuges.

Find out more about [fees & passes here](#).

The Ridgefield National Wildlife Refuge Administration Office is open weekdays, 8:00 am - 4:00 pm. Please call ahead to check for staff availability. General inquiries M-F, 8:00 am - 4:30 pm, may be answered at 360-887-4106.

RIDGEFIELD NATIONAL WILDLIFE REFUGE

RIVER 'S' UNIT & CARTY UNIT

1071 S Hillhurst AVE

Auto Tour Route

Kiwa Trail

28908 NW Main AVE

Admin Office

Walking Trails

Cathlapotle Plankhouse

Ridgefield Complex News & Events



You say 'Goodbye' and we say 'Hello'

We are celebrating the contributions of four amazing employees who are moving to their next adventure, and welcoming two new seasonals!

“How lucky I am to have something that makes saying goodbye so hard.”

-A.A. Milne (Winnie-the-Pooh)

(Right to left: Britta Plumhoff, Hannah Ferwerda, Alyssa Jayne

Mayor, Chadd Smith)

- **Alyssa Jayne Mayor** - *Youth Conservation Corps Crew Lead, Hunter Checkstation Operator, and Volunteer Supervisor*

“My favorite animal that I got to see on the Refuge were the short-eared owls. However, my most favorite things are the normal-eared people that made up the team, they always made me feel heard and supported and never failed to make me laugh.”

“Alyssa Jayne is the kindest human I have ever met! She is so beyond witty and passionate about her work. I’m truly thankful I got the chance to meet her.”

“Words of praise have been streaming in from the visitors and volunteers alike about her consistently positive attitude, intelligence, and sense of humor. She has shown us all how you can be efficient in your work while still connecting with people and having fun.”

- **Hannah Ferwerda** - *Biological Technician and Hunter Checkstation Operator*

“Hannah is super sweet and helpful. She always puts others first and is wonderful to work with!”

“Hannah’s dedication to doing the best job she can while supporting her community is inspiring. Working with her means you are likely going to learn something unexpected and walk away with a smile. The work she did brought in so much praise from our visitors and staff.”

“Hannah is so kind and her enthusiasm for biological facts is contagious! She’s always up for a new experience and jumps at any task at hand to help out.”

- **Chadd Smith** - *Engineering Equipment Operator*

“Chadd is very helpful and knowledgeable. He puts a lot of effort in his work and the outcomes reflect that.”

“It was so wonderful getting to work with Chadd! He is a wealth of knowledge and is always willing to take time and lend a hand.”

“Chadd is passionate about conservation and connecting people to our natural resources. We are so happy to see him get this well-deserved promotion and look forward to continuing to benefit from his talents as he works to support this and other refuges in the region in his new role.”

- **Britta Plumhoff** - *Refuge Administrative Support Assistant*

“Britta is always ready to help in any way she can and she does so with a smile and the best jokes!”

“Britta is an incredibly hard worker and I’m so excited to see the amazing things she accomplishes! It has been a pleasure getting to know and work with her!”

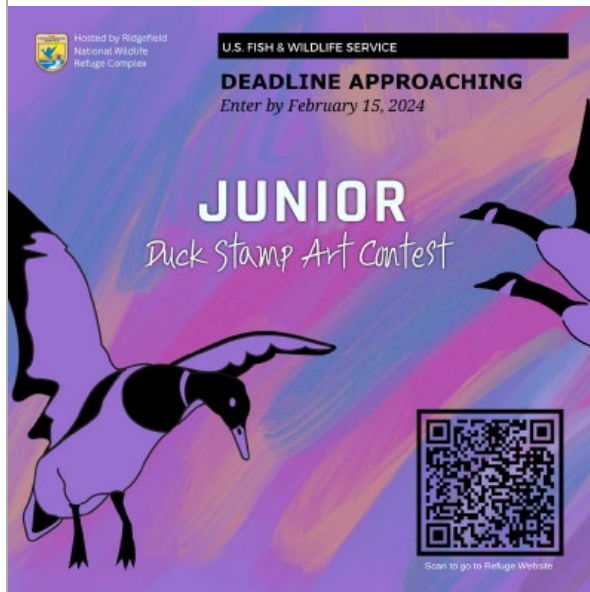
“Britta’s work here will be felt for years to come. She never ran out of unique ideas to engage visitors, bring more organization and efficiency to the office, and make us all laugh with her wit. We will miss her but also we are happy to know that she will be continuing her amazing work toward conservation and connecting communities wherever she goes.”

Welcome Elise and Lily!

Elise Carlson was born and raised in Joliet, IL, though has been residing in the PNW for almost 5 years now. She graduated from Reed College in Portland, OR this past spring with a B.A. in Anthropology. She has been brought on as an *Indigenous Guidebook Apprentice* with the SCA and is very excited to be joining the team at Ridgefield! She's looking forward to learning more about ethnobotany and is excited to help with a variety of the Refuge's many unique projects.



Lily Fittinghoff is Ridgefield's new *Public Lands Transportation Fellow* and will be working out of the admin office for the next 18 months. She is a recent graduate of Columbia University with a bachelor's in urban studies and data analysis. In her free time, she likes to play rugby, run, and bake sourdough bread. During her stay at Ridgefield she is excited to improve her birding skills and hopefully see a Bittern!



Washington Junior Duck Stamp Contest

If you know a student in grades K-12 who enjoys observing nature and making art, this free competition is for them!

Submissions Due: February 15, 2024

Learn more by visiting the following website:

Washington Junior Duck Stamp Contest

From the Contact Station

A Little Ice with Your Winter Storm?

Christmas Bird Count: Weather certainly has had a big influence on what we were seeing on the Refuge at the end of 2023 into January 2024. On December 31, 2023, the Refuge was covered by birders doing the Audubon Christmas Bird Count. We accessed every field and wet area to count all the birds we could find. RNWR is a big part of the Sauvie Island CBC circle, which itself covers Vancouver Lake Bottoms up to the Lewis River, and most of Sauvie Island, parts of Scappoose and the Columbia River between. It looks like the Refuge counters found about 94 species (sightings are still under review)...Keep reading...



-Susan Setterberg, Contact Station Volunteer

Friends Online Store



also available!

View the 2023 Pro Photo Supply Ridgefield NWR Photo Contest Winning images on tote bags, sweatshirts, t-shirts, a variety of mug styles, and photo cards! Chinookan Steller's Jay design, as well as BirdFest & Bluegrass button art,

[Start Shopping](#)

Psst...if you love a good jigsaw puzzle on a winter day...

[Click Here for Puzzles!](#)

Help Wildlife with your Everyday Purchases

Let your pocket change work for you, and make a difference for nature, like helping to keep wildlife wild.

1. Head to RidgefieldFriends.org, then click the green "Donate" button on bottom-left of any page.
2. Activate any card you use for your daily purchases.
3. Set your monthly giving limit. Change it any time.
4. Every purchase you make with your designated card will be automatically rounded up, and the proceeds donated directly to the Friends of Ridgefield National Wildlife Refuge in support of the Refuge's programs.
5. While not required, by registering an account, you help reduce duplicates and allows you to access and edit your donation details at any time.

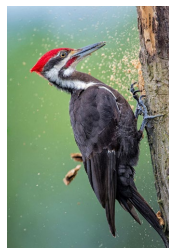


It's that easy!

[Donate Your Spare Change](#)

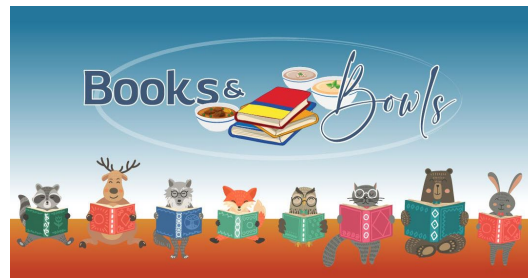
Questions? Check out the FAQ, here.

Birding Enthusiasts



Check out what species are being

Ridgefield First Saturdays Books & Bowls February 3, 2024



Join the City of Ridgefield on Saturday, February 3, 2024, to celebrate National Library Lover's Month and Take Your Child to the Library Day!

seen on the Refuge [here](#).

Find the Friend's and the Refuge's Bird Feeder Bowl Kits at [Seasons Coffee inside the Old Liberty Theater](#), while supplies last!

[Get the full schedule here](#)

Stay Involved:

Would you like to enjoy a cup of coffee from Ridgefield's Seasons Coffee after a morning hike on the Refuge? Lunch in-between the River 'S' and Carty Units? Dinner and drinks at the Historic Sportsman's Restaurant and Lounge? Or maybe you would like to get some supplies at Shovel & Thumb or Backyard Bird Shop? How about a night out at ilani?

Find out more, [become a Friend](#), or [renew your membership](#) today and receive a member card with great discounts at these wonderful local businesses! Feel free to [contact us](#) for any questions or inquiries.

Benefits of Friends Membership



The Friends of the Ridgefield National Wildlife Refuge promote the enjoyment, understanding, and protection of native and endangered birds, other wildlife, and their habitats. We focus on our local community and the Pacific Northwest.

Friends Board Meetings

Join the Friends of Ridgefield NWR Board for their monthly meeting. Meetings start at **5:00 PM** every second Monday of the month and will be virtual through the winter. [Contact us](#) to join in!

Board Meeting Dates:

February 12

March 11

April 8

May 13

June 10

July 8

August 12

September 9

October 15*

November 11

December 9

(*moved due to federal holiday or special circumstance)



Board Seeking New Members

Or, Join a Committee

We are always recruiting candidates with diverse backgrounds and skills for several open board positions, in addition to candidates interested in serving on a committee (board membership not required). Find out more, and [contact us here](#)

Become a Business Alliance Member

As a member of the Friends of the RNWR Business Alliance, you invest in one of our urban metropolitan area's most unique and diverse natural and cultural resources. [Find out more](#)

Support While You Shop



When you link your Fred Meyer Rewards Card to the Friends, you help us earn donations from Fred Meyer Community Rewards. It's easy to sign up. [Just click here.](#) Or search, Friends of Ridgefield NWR #PK822

Sponsors:

Business Alliance Members:

In-Kind Support:



BirdFest & Bluegrass:



Granting Organizations & Partners:



FRIENDS OF RIDGEFIELD
NATIONAL WILDLIFE REFUGE 

[Contact Us](#) | [Website](#)

Want regular updates on Refuge events & happenings? Follow the Friends on social media by clicking the logos below to stay connected even when you are off the Refuge.

