

[View as Webpage](#)

Please add [contact@ridgefieldfriends.org](mailto:contact@ridgefieldfriends.org) to your address book or safe senders list.  
You are receiving this email because you are either a member or signed up for our mailing list.



Raul Moreno

Image credit: Raul Moreno, 2017, 2nd Place, Pro Photo Supply Refuge Photo Contest

## The Friends of Ridgefield National Wildlife Refuge

The latest updates | February 2024

Refuge Open Hours:  
7:30 am - 5:00 pm

### **RIDGEFIELD NATIONAL WILDLIFE REFUGE**

#### **RIVER 'S' UNIT & CARTY UNIT**

1071 S Hillhurst AVE      2890B NW Main AVE  
Auto Tour Route      Admin Office  
Kwra Trail      Walking Trails  
Cathlapotle Plankhouse

You can enter either RNWR unit by paying an Entrance Fee or using an eligible Entrance Pass.  
Youth 15 and under are always free.

Please note: Bicycles, off-road vehicles, & ATV driving are not permitted on the Refuge.

#### Entrance Fee:

- Online: **NEW!** Easily pay your entrance fee (or purchase an entrance pass) *before* you visit, by using [recreation.gov](https://recreation.gov).
- In-Person: \$3.00 daily per vehicle, or up to four adults on foot. Cash or check only (or scan a QR code to [recreation.gov](https://recreation.gov) on-site, for now).

#### Entrance Pass Options:

- Online: **New!** Easily buy an Annual Pass *before* you visit, using [recreation.gov](https://recreation.gov).
- In-person (or by mail): Purchase An Annual Refuge Pass or eligible Federal Lands Pass.
  - \$15.00 for an Annual Ridgefield NWR pass. Purchase at Ridgefield NWR Admin Office, M-F, 9:00 am - 3:00 pm; by mail; or place cash/check in an official fee envelope. Complete details [HERE](#).
- Become a Friends Member at \$60 or above.
  - [Join here!](#) Opt-in when joining, and an Annual Refuge Pass will be mailed to you.
- Use your current Federal Lands Pass. [Check HERE](#) to see the list of eligible passes. Note: State Passes are \*not valid for entry to the Refuge.


The Ridgefield NWR Admin Office is open weekdays, 9:00 am - 3:00 pm.

Office phone number: 360-887-4106.

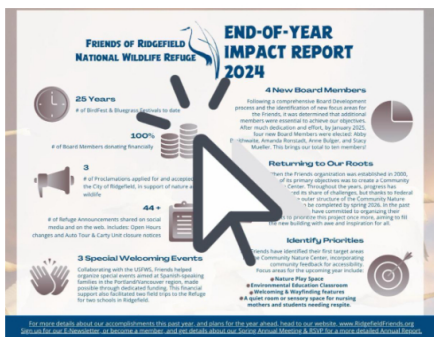
-To verify staff availability, please call the office before you visit the Refuge.

-For general inquiries, please call the office between 9:00 am - 3:00 pm.

## From the Friends End-of-Year Impact Report 2024

FRIENDS OF RIDGEFIELD  
NATIONAL WILDLIFE REFUGE 

Check out the Friends of Ridgefield 2024 End-of-Year Impact Report! It's packed with quick details about the Friend's work in the past year. Discover the latest developments, success stories, and how your support has made a meaningful difference.



(click image to view End of Year Impact Report flipbook)

Stay tuned for details about the Friends' Annual Membership & Volunteer Appreciation event and Annual Report, coming late spring 2025.

### Welcome New Board Members!



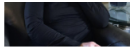
Stacy Mueller has lived in Ridgefield for 2 years and has enjoyed volunteering at the Ridgefield National Wildlife Refuge and in the Ridgefield community. Stacy works part-time with substance use prevention partners to promote Health and Wellness among youth and within communities. One of the strategies used to do this is to highlight spending time outdoors and in nature.



Amanda Ronstadt has served on the Ridgefield School Board since November 2024. Throughout the years, she has taken on various volunteer positions, dedicating her personal time to advocate for education and support students in the Ridgefield community.



Anne Bulger raised her family in Brush Prairie and is now happily a Ridgefield resident, living with her husband, Paul, and their beloved dog, Lily. Anne is passionate about nature and volunteers as a WSU Master Gardener, an OSU Master Melittologist, in the WA Bee Atlas, and with the



Ridgefield Garden Club. Anne is a public presenter of Master Gardener topics such as Mason bees and native plants. You may find Anne sampling native bees on the Carty Unit this spring and summer.

## Gifts for your Valentine

Spread the love this Valentine's Day by gifting a membership to the Friends! When you become a member of the Friends of Ridgefield National Wildlife Refuge, you're not just getting a pretty card and sticker—you're joining a fabulous squad dedicated to protecting our furry and feathered pals and their homes. Plus, you'll be helping to spark a passion for the natural wonders and cultural treasures of the Ridgefield National Wildlife Refuge. Love for nature? Yes, please!



OR catch us at the Ridgefield First Saturday Books and Bowls event, on February 1, 2025, inside Seasons Coffee in the Old Liberty Theater. Exchange a token for beautiful nature-themed wrapping papers and ribbon to wrap Valentine's gifts for everyone in your life. Tokens spent with us become dollars donated!

Bonus: we've teamed up with Zeffy to dodge those pesky platform fees, making sure every bit of your generosity goes straight to the Refuge. Become a member online today, and get a new digital membership card to use around town for discounts, special offers, and more!

[Learn More & Join the Friends Today!](#)



## From the Contact Station Patterns and Cycles of Mother Nature and our Contributions

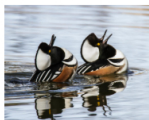
Many of our visitors are weekly and some even daily on the Refuge. Some like to come when the swans arrive in October while others get excited at about the potential of seeing a Sora or

Virginia rail chick in the late spring. Some people enjoy the changing colors of the refuge going into the fall browns and reds or coming out in the spring in the rainbow of greens. Over time we learn the rhythm...Keep Reading...

-Susan Setterberg, Ridgefield National Wildlife Refuge Contact Station Volunteer

alt text: Ridgefield Port Cam on Nesting Osprey - May

## Birding Enthusiasts



See what bird species are being seen on the Ridgefield National Wildlife Refuge - both past and current archives - on our website, here.

## Ridgefield First Saturday Books & Bowls

Join us for the 3rd Annual Books & Bowls Event on February 1st! Check out the fun, new additions to the lineup of activities!



Visit the City of Ridgefield booth at the Ridgefield Community Library to get a bowl token, 10 AM - 2 PM, or while supplies last. Tokens are only valid at participating businesses or activities, to turn in and receive a delicious treat in a bowl, a flower arrangement, a ceramic bowl, lovely nature-themed wrapping papers and ribbon (Inside Seasons Coffee, from the Friends!) and more!

[Books & Bowls Event Info](#)

## Stay Involved:

### Support While You Shop



We have photo contest mugs, tote bags, t-shirts, and jigsaw puzzles for cold wintery nights, gifts for loved ones, or a treat for yourself!

[Main Webstore](#)

[Puzzle Shopping](#)



Friends Amazon Wishlist- You can directly support our work and the Refuge's initiatives! Whether it's habitat restoration or BirdFest & Bluegrass, we'll feature items essential to our many efforts toward achieving conservation and community outreach goals. Purchase from our list, and Amazon takes care of the rest! Get started, HERE.



When you link your Fred Meyer Rewards Card to the Friends, you help us earn donations from Fred Meyer Community Rewards. It's easy to sign up. Just click here. Or search, Friends of Ridgefield NWR #PK822

## Friends Board Meetings

Join the Friends of Ridgefield NWR Board for their monthly meeting. Meetings start at 5:00 PM every second Monday of the month and will be *either* virtual or in-person with a virtual option. Please [contact us](#) to find out how to join in!



### Board Meeting Dates 2025:

February 10

March 10

April 14

May 12

June 9

July 14

August 11

September 8

\*October 20

November 10

December 8

\*moved due to a federal holiday or special circumstance

## Become a Business Alliance Member

As a member of the Friends of the RNWR Business Alliance, you invest in one of our urban metropolitan area's most unique and diverse natural and cultural resources. [Find out more.](#)

### Sponsors:

Business Alliance Members:

In-Kind Support:



BirdFest & Bluegrass:



Granting Organizations & Partners:



FRIENDS OF RIDGEFIELD  
NATIONAL WILDLIFE REFUGE



[Contact Us](#) | [Website](#)

Want regular updates on Refuge events & happenings? Follow the Friends on social media by clicking the logos below to stay connected even when you are off the Refuge.



Friends of Ridgefield National Wildlife Refuge | PO BOX 1022 | Ridgefield, WA 98642 US

[Unsubscribe](#) | [Update Profile](#) | [Constant Contact Data Notice](#)



Try email marketing for free today!